

# LED PIXEL CONTROL

**QolorPIX™**  
PLUG & PLAY PIXEL CONTROL

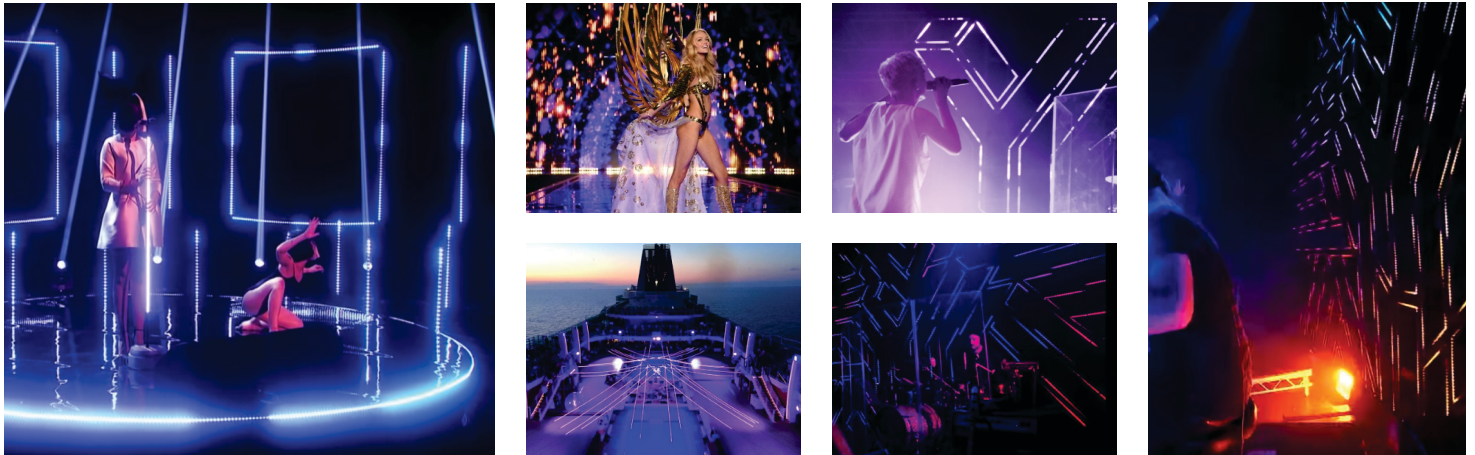


**CITY**  
**THEATRICAL**  
NEW YORK • LONDON

# ABOUT

## QolorPIX™

City Theatrical's new QolorPIX™ line of pixel control products are the perfect compliments to our award winning QolorFLEX LED tape and accessories. We offer a range of wired and wireless control devices for use in both small and large scale applications. A growing list of tape, fixtures, cables and accessories are available.



## PIXEL CONTROL MADE EASY

While many companies offer component products for control of addressable LED tape and fixtures, the process of set up and operation can prove to be extremely challenging. We've adopted an approach to pixel control which offers a high level of creativity combined with plug and play useability. Each QolorPIX controller is preconfigured with personality profiles which can be combined and tuned to produce thousands of dynamic effects using only a few DMX channels. Chases, fades, scrolls, bursts, and other effects can be created and saved as needed. Fixtures and tape strips connect to the controllers using industry standard 4 pin XLR connectors. Within one minute, the system can be up and running.



## QolorPIX Pixel Controlled LED Tape

As with our QolorFLEX™ tape, QolorPIX Pixel Controlled LED Tape is produced to our exact specifications and is suited for the most demanding professional applications. It is similar to common multicolor LED strip but is configured so that each LED is individually controllable. Sold in 5 meter (16.4') reels, QolorPIX tape has 48 LEDs per meter, and is encased in a clear rectangular silicone tubing making it water resistant (IP 67 rated). XLR connectors are soldered to one end of the tape. Maximum run length of any single strip is 5m with a maximum cable connection length (between controller and tape) being 10m. QolorPIX tape runs on 5VDC.

## QolorPIX Tape Controllers

QolorPIX Tape controllers are available in two or eight port styles each with an integrated power supply. Both models feature 24 channels of DMX control. The two port model will work with up to 10m of 48 LED/m tape, and the eight port unit will run 40m. Both controllers feature a built in menu system that allows you to change mode, pixel length, dimmer, personality start address, strip type, fixture ID and direction. They also have a built in test function and flicker finder to assist with fault finding. The user interface features four button controls plus an LED display to allow easy set up and operation.

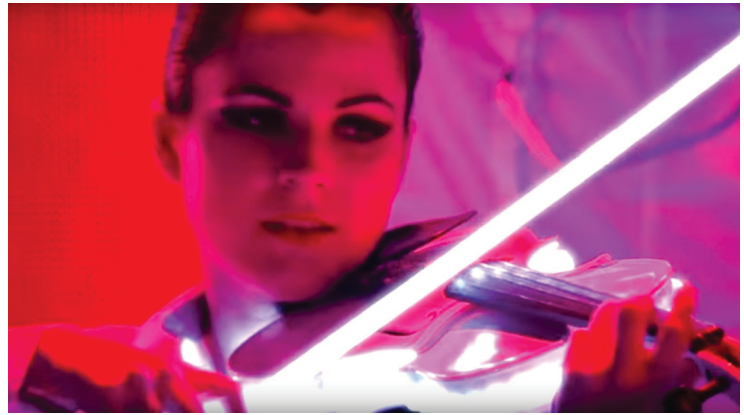


*QolorPIX Tape Controller, Eight Output -PN 5850*



## WIRELESS WEARABLE CONTROLLER

For costumes, props or other mobile applications, we have combined our award winning SHoW DMX wireless DMX system with a miniature “wearable” control unit. This unit is battery powered and will control up to 300 LEDs. Wireless range is up to 300’ depending on environment. This unit works perfectly with our SHoW DMX SHoW Baby® or SHoW DMX Neo® wireless transceivers.



# SPECIFICATIONS

## QolorPIX Pixel Controlled LED Tape

CTI Part no.	Q5050-5-RGB-48-5-67-2
LEDs per meter	48
Voltage	5V DC
Watts/meter (max)	14.4W
Viewing angle	120°
PCB color	Black
IP rating	67
Coating	Clear Silicone
Connection	4-Pin XLRM soldered to 6" pigtail
Cutting increment	.827" (21mm)
Height	.188" (4.8mm)
Width	.563" (14.3mm)
Length	16.4' (5m)

## QolorPIX Tape Controller, Eight Output

CTI Part no.	5850
Number of outputs	8
Max pixels per output	320
Voltage	85-264 VAC
Watts (total output)	600W
Max cable distance to LED strip	10m (32.8ft)
Output connectors	4-Pin XLRF
Input power connection	PowerCON
DMX connections:	5-Pin XLR
Construction:	Nema 1 IP 20 steel enclosure
Compliance:	CE, RoHS, FCC

*Specifications subject to change*

# CITY THEATRICAL

NEW YORK • LONDON

475 BARELL AVENUE, CARLSTADT, NJ 07072  
800.230.9497 201.549.1160 201.549.1161 FAX



WWW.CITYTHEATRICAL.COM