

VIGNETTE PoE WALL STATION INSERTS



- Models shown:
1. PWFP G4 WH
 2. PWWSI VPOE B4 WH
 3. PWWSI LOC S3 WH
 4. PWWSI LOC S3 WH
 5. PWWSI LOC S1 WH

WARRANTY

3-year limited warranty. Complete warranty terms located at:
<https://www.acuitybrands.com/support/warranty>

NOTE

Actual performance may differ as a result of end-user environment and application. Specifications subject to change without notice.

ORDERING INFORMATION

INDIVIDUAL WALL STATION INSERTS - PWWSI				EXAMPLE: PWWSI VPOE S3 WH			
Series	Network	Control Type	Finish				
PWWSI	Pathway Wall Station Inserts	VPOE ¹	Vignette PoE (Power-over-Ethernet) Master Insert	B2	2 Buttons	BL	Matte Black
		LOC	Local Insert	B4	4 Buttons	WH	White
				S1	Single Slider		
				S2	Dual Sliders		
				S3	Triple Sliders		

WALL STATION KITS - PWWSK				EXAMPLE: PWWSK VPOE G3 1B4 2S3 3S1 WH							
Series	Network	Size	Wall Station 1	Wall Station 2 ⁴	Wall Station 3 ⁴	Wall Station 4 ⁴	Wall Station 5 ⁴	Wall Station 6 ⁴	Finish		
PWWSK ^{2,3}	Pathway Wall Station Kit	VPOE Vignette PoE (Power-over-Ethernet)	G1 1-Gang	1B2 2 Buttons	2B2	3B2	4B2	5B2	6B2	BL	Matte Black
			G2 2-Gang	1B4 4 Buttons	2B4	3B4	4B4	5B4	6B4	WH	White
			G3 3-Gang	1S1 Single Slider	2S1	3S1	4S1	5S1	6S1		
			G4 4-Gang	1S2 Dual Sliders	2S2	3S2	4S2	5S2	6S2		
			G5 5-Gang	1S3 Triple Sliders	2S3	3S3	4S3	5S3	6S3		
			G6 6-Gang								

Notes

1. Each Wall Station requires only one POE Master Insert. Remaining Inserts are LOC.
2. PWWSK includes PWFP faceplate in the Size and Finish specified.
3. PWWSK simplifies ordering of full wall stations, however will ship as individual items. Kits are not pre-assembled. If ordering using PWWSK, the kit will be broken out into individual lines referencing PWWSI and PWFP items on Sales Order Acknowledgement.
4. Specify only the same number of Wallstations as selected Gangs (Size).

OVERVIEW

Vignette™ is a system of modular button and slider wall station inserts that allow you to snapshot four Universes of E1.31 sACN or one Universe of DMX512 from any control source, and then play back those static looks without further need for any lighting controllers or equipment.

Design the exact configuration needed for each wall station, from 1-gang to 6-gang. Each wall station needs only one "Master" Insert (PWWSI VPOE), which receives data and power; the remaining "Local" inserts (PWWSI LOC) connect together easily and can be re-arranged as needed.

Buttons can be Press-and-Hold to Record, and Press to Play Back; Sliders can act as a Grand Master for the Vignette's output or proportionately control user-defined Zones with minimum and maximum values for individual channels.

Vignette is ideal for applications such as hotels, restaurants, bars and nightclubs, retail, and others where dynamic looks are not needed.

Please note that we cannot provide engraving services.

FEATURES

- Configuration using free downloadable Pathscape software
- Buttons can be configured to act as Snapshot Replay, Non-Dim Zone On/Off, sACN Priority Override, Blackout, Grand Master, Record Enable and Take Control
- Sliders can be configured to act as Zone Control, Snapshot Master or Grand Master
- Inserts available in 2 and 4-button, and 1, 2, and 3-slider
- Power-over-Ethernet (PoE) operation makes installation simple and easy
- Attractive design available in Matte Black or White finish
- Compatible with Pathway Faceplates (PWFP)
- Local inserts' positions are swappable; Master Insert must be in the left-most position
- Also available in 485 wiring option (PWWSI V485)

SPECIFICATIONS

Electrical

Input Ratings PoE Class 2 device
7.5W maximum power consumption, per station

Cabling Standard CAT5/5e/6 Ethernet, 328 ft (100 m) maximum

Regulatory Compliance CE

Mechanical

Dimensions 1.72" W x 4.2" H x 1.7" D (44mm W x 107mm H x 43mm D) [per insert]

Weight 0.2375 lbs (0.1 kg) [per insert]

Environmental

Operating Temperature 14°F to 122°F (-10°C to 50°C)

Relative Humidity 5-95%, non-condensing

Standard Compliance RoHS 2011/65/EU + A1 2015/863

General

Compliance ANSI E1.31 sACN - Streaming ACN
IEEE 802.3af Power-over-Ethernet
California Title 1.81.26, Security of Connected Devices

PART NUMBER CROSS-REFERENCE

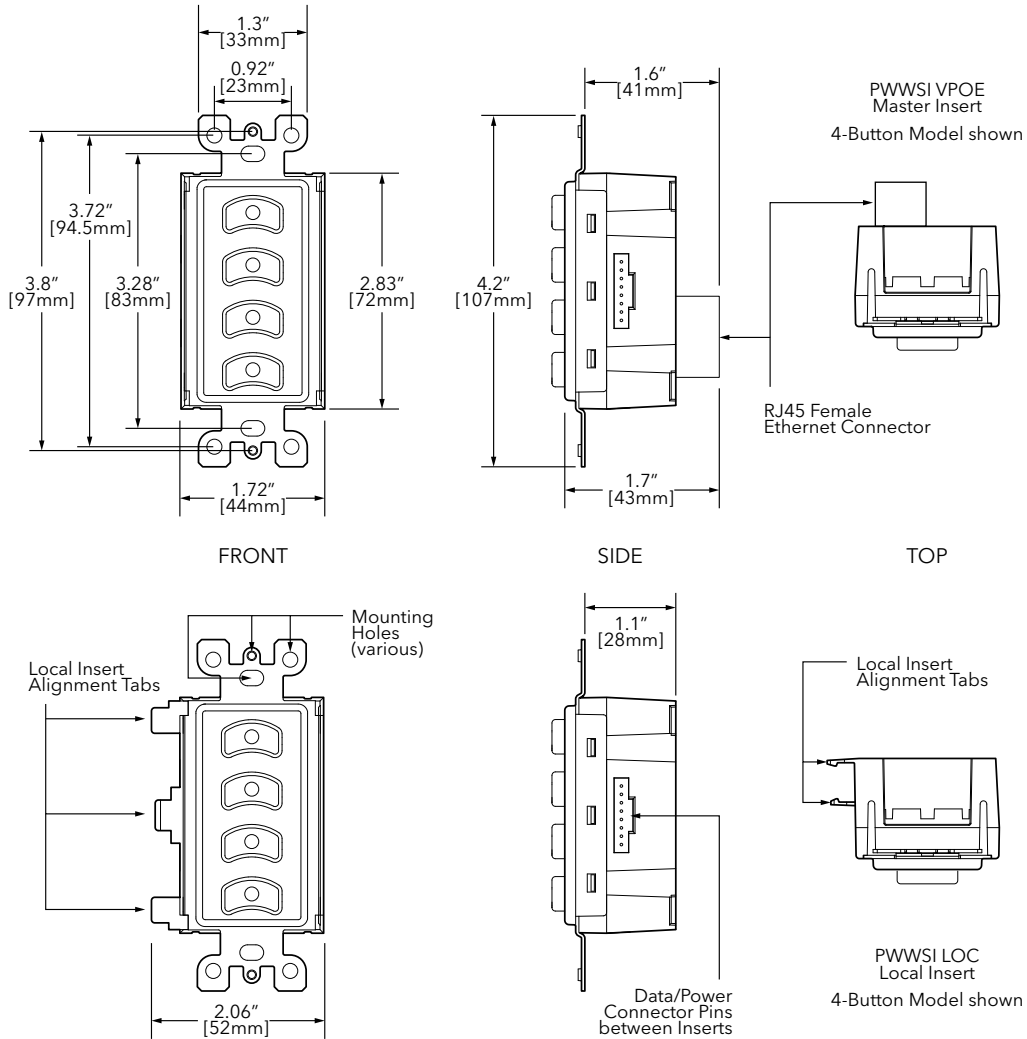
PREVIOUS		NEW	
Part Number	Catalog Number	Description	
0700-5411 [BL/WH]	PWWSI VPOE B2 [BL/WH]	Wall Station Insert, Vignette Power over Ethernet Master, 2-Buttons, [Black/White]	
0700-5412 [BL/WH]	PWWSI VPOE B4 [BL/WH]	Wall Station Insert, Vignette Power over Ethernet Master, 4-Buttons, [Black/White]	
0700-5413 [BL/WH]	PWWSI VPOE S1 [BL/WH]	Wall Station Insert, Vignette Power over Ethernet Master, Single Slider, [Black/White]	
0700-5414 [BL/WH]	PWWSI VPOE S2 [BL/WH]	Wall Station Insert, Vignette Power over Ethernet Master, Dual Slider, [Black/White]	
0700-5415 [BL/WH]	PWWSI VPOE S3 [BL/WH]	Wall Station Insert, Vignette Power over Ethernet Master, Triple Slider, [Black/White]	
0700-5901 [BL/WH]	PWWSI LOC B2 [BL/WH]	Wall Station Insert, Local, 2-Buttons, [Black/White]	
0700-5902 [BL/WH]	PWWSI LOC B4 [BL/WH]	Wall Station Insert, Local, 4-Buttons, [Black/White]	
0700-5903 [BL/WH]	PWWSI LOC S1 [BL/WH]	Wall Station Insert, Local, Single Slider, [Black/White]	
0700-5904 [BL/WH]	PWWSI LOC S2 [BL/WH]	Wall Station Insert, Local, Dual Slider, [Black/White]	
0700-5905 [BL/WH]	PWWSI LOC S3 [BL/WH]	Wall Station Insert, Local, Triple Slider, [Black/White]	

ADDITIONAL ORDERING INFORMATION

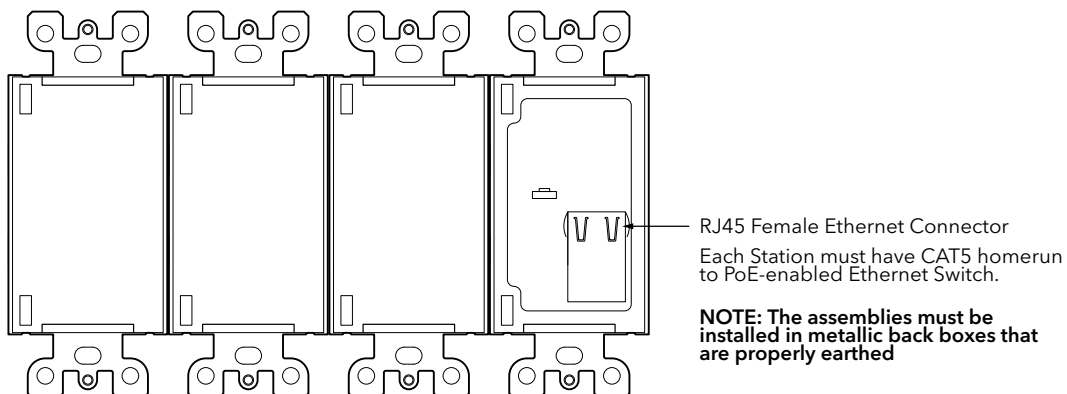
PWFP		EXAMPLE: PWFP G6 BL	
Series	Width	Finish	
PWFP Pathway Faceplates	G1 1-Gang	BL	Matte Black
	G2 2-Gang	SS	Stainless Steel
	G3 3-Gang	WH	White
	G4 4-Gang		
	G5 5-Gang		
	G6 6-Gang		

Accessories	
PWVIA DIN P16 RJ45 SFP SLOT POE	VIA, DIN-mount, 16-Ports, RJ45 Connector, Empty SFP Slots, PoE Enabled
PWACC WSDT	Pathway Accessory, 3-Gang PoE Desktop Console
PWACC D3G	Pathway Accessory, Stage Manager's 4U rack panel, with dual 3-gang positions

DIMENSIONS



Rear View of Assembled Station



APPLICATION RISER

