

# NSB PoE WALL STATION INSERTS



Models shown: 1. PWFP G3 BL  
2. PWWSI NPOE S3 BL  
3. PWWSI LOC B4 BL  
4. PWWSI LOC B2 BL

## WARRANTY

3-year limited warranty. Complete warranty terms located at:  
<https://www.acuitybrands.com/support/warranty>

## NOTE

Actual performance may differ as a result of end-user environment and application. Specifications subject to change without notice.

## ORDERING INFORMATION

INDIVIDUAL WALL STATION INSERTS - PWWSI				EXAMPLE: PWWSI NPOE B4 WH			
Series	Network	Control Type	Finish				
PWWSI Pathway Wall Station Inserts	NPOE <sup>1</sup> NSB PoE (Power-over-Ethernet) Master Insert	B2 2 Buttons	BL Matte Black	WH White			
	LOC Local Insert	B4 4 Buttons					
		S1 Single Slider					
		S2 Dual Sliders					
		S3 Triple Sliders					

WALL STATION KITS - PWWSK				EXAMPLE: PWWSK NPOE G3 1B4 2S3 3S1 WH						
Series	Network	Size	Wall Station 1	Wall Station 2 <sup>4</sup>	Wall Station 3 <sup>4</sup>	Wall Station 4 <sup>4</sup>	Wall Station 5 <sup>4</sup>	Wall Station 6 <sup>4</sup>	Finish	
PWWSK <sup>2,3</sup> Pathway Wall Station Kit	NPOE NSB PoE (Power-over-Ethernet)	G1 1-Gang	1B2 2 Buttons	2B2	3B2	4B2	5B2	6B2	BL Matte Black	
		G2 2-Gang	1B4 4 Buttons	2B4	3B4	4B4	5B4	6B4		WH White
		G3 3-Gang	1S1 Single Slider	2S1	3S1	4S1	5S1	6S1		
		G4 4-Gang	1S2 Dual Sliders	2S2	3S2	4S2	5S2	6S2		
		G5 5-Gang	1S3 Triple Sliders	2S3	3S3	4S3	5S3	6S3		
		G6 6-Gang								

## Notes

- Each Wall Station requires only one POE Master Insert. Remaining Inserts are LOC.
- PWWSK includes PWFP faceplate in the Size and Finish specified.
- PWWSK simplifies ordering of full wall stations, however will ship as individual items. Kits are not pre-assembled. If ordering using PWWSK, the kit will be broken out into individual lines referencing PWWSI and PWFP items on Sales Order Acknowledgement.
- Specify only the same number of Wallstations as selected Gangs (Size).

## OVERVIEW

NSB™, or Networked Sliders and Buttons, is a system of modular, remote button and slider wall station inserts that are designed to be paired with the Cognito<sup>2</sup> and Choreo lighting control platforms.

Design the exact configuration needed for each wall station, from 1-gang to 6-gang. Each wall station needs only one "Master" Insert (PWWSI NPOE), which receives data and power; the remaining "Local" inserts (PWWSI LOC) connect together easily and can be re-arranged as needed.

The wall stations are discovered and configured on the Cognito<sup>2</sup> or Choreo controllers. Each button or slider can be configured to control a recorded memory action on the Choreo or Cognito<sup>2</sup>.

Please note that we cannot provide engraving services.

## FEATURES

- Associate buttons and sliders with memories recorded on a Cognito<sup>2</sup> or Choreo controller on the same network
- Button behavior mimics memory's recorded button actions
- Inserts available in 2 and 4-button, and 1, 2, and 3-slider
- Power-over-Ethernet (PoE) operation makes installation simple and easy
- Attractive design available in Matte Black or White finish
- Compatible with Pathway Faceplates (PWFP)
- Local inserts' positions are swappable; Master Insert must be in the left-most position
- Also available in 485 wiring option (PWWSI N485)

## SPECIFICATIONS

### Electrical

**Input Ratings** PoE Class 2 device  
7.5W maximum power consumption, per station

**Cabling** Standard CAT5/5e/6 Ethernet, 328 ft (100 m) maximum

**Regulatory Compliance** CE

### Mechanical

**Dimensions** 1.72" W x 4.2" H x 1.7" D (44mm W x 107mm H x 43mm D) [per insert]

**Weight** 0.2375 lbs (0.1 kg) [per insert]

### Environmental

**Operating Temperature** 14°F to 122°F (-10°C to 50°C)

**Relative Humidity** 5-95%, non-condensing

**Standard Compliance** RoHS 2011/65/EU + A1 2015/863

### General

**Compliance** IEEE 802.3af Power-over-Ethernet  
California Title 1.81.26, Security of Connected Devices

## PART NUMBER CROSS-REFERENCE

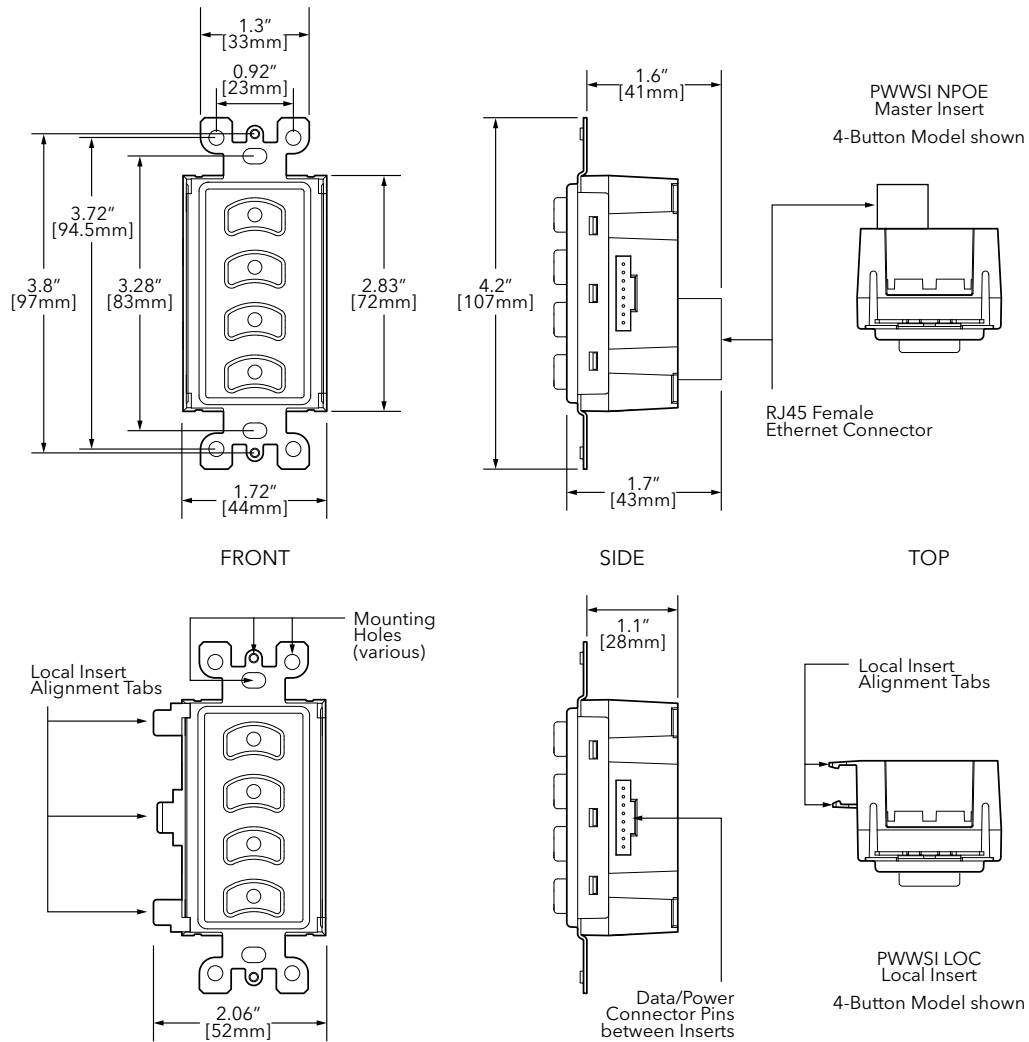
PREVIOUS		NEW
Part Number	Catalog Number	Description
0700-5311 [BL/WH]	PWWSI NPOE B2 [BL/WH]	Wall Station Insert, NSB Power over Ethernet Master, 2-Buttons, [Black/White]
0700-5312 [BL/WH]	PWWSI NPOE B4 [BL/WH]	Wall Station Insert, NSB Power over Ethernet Master, 4-Buttons, [Black/White]
0700-5313 [BL/WH]	PWWSI NPOE S1 [BL/WH]	Wall Station Insert, NSB Power over Ethernet Master, Single Slider, [Black/White]
0700-5314 [BL/WH]	PWWSI NPOE S2 [BL/WH]	Wall Station Insert, NSB Power over Ethernet Master, Dual Slider, [Black/White]
0700-5315 [BL/WH]	PWWSI NPOE S3 [BL/WH]	Wall Station Insert, NSB Power over Ethernet Master, Triple Slider, [Black/White]
0700-5901 [BL/WH]	PWWSI LOC B2 [BL/WH]	Wall Station Insert, Local, 2-Buttons, [Black/White]
0700-5902 [BL/WH]	PWWSI LOC B4 [BL/WH]	Wall Station Insert, Local, 4-Buttons, [Black/White]
0700-5903 [BL/WH]	PWWSI LOC S1 [BL/WH]	Wall Station Insert, Local, Single Slider, [Black/White]
0700-5904 [BL/WH]	PWWSI LOC S2 [BL/WH]	Wall Station Insert, Local, Dual Slider, [Black/White]
0700-5905 [BL/WH]	PWWSI LOC S3 [BL/WH]	Wall Station Insert, Local, Triple Slider, [Black/White]

## ADDITIONAL ORDERING INFORMATION

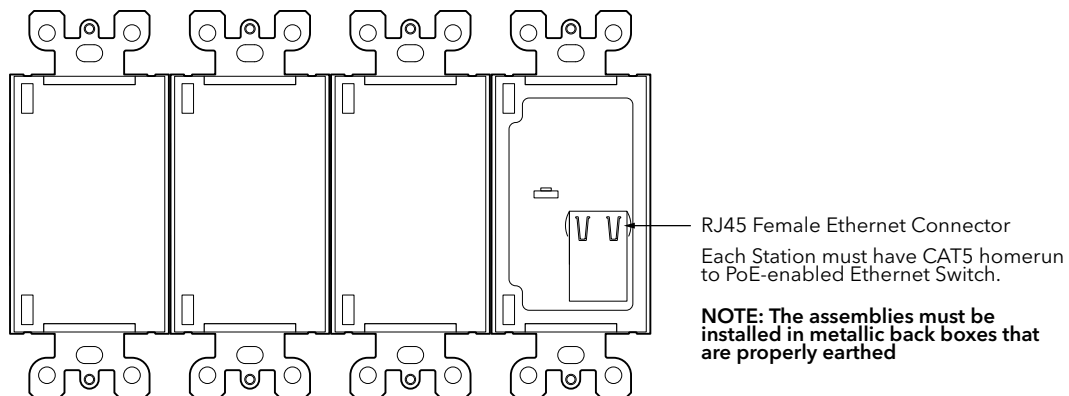
PWFP		EXAMPLE: PWFP G6 BL	
Series	Width	Finish	
PWFP Pathway Faceplates	G1 1-Gang	BL	Matte Black
	G2 2-Gang	SS	Stainless Steel
	G3 3-Gang	WH	White
	G4 4-Gang		
	G5 5-Gang		
	G6 6-Gang		

Accessories	
PWVIA DIN P16 RJ45 SFPSLOT POE	VIA, DIN-mount, 16-Ports, RJ45 Connector, Empty SFP Slots, PoE Enabled
PWACC WSDT	Pathway Accessory, 3-Gang PoE Desktop Console
PWACC D3G	Pathway Accessory, Stage Manager's 4U rack panel, with dual 3-gang positions

## DIMENSIONS



## Rear View of Assembled Station



## APPLICATION RISER

