

NSB 485 WALL STATION INSERTS



Models shown: 1. PWFP G3 BL
2. PWWSI N485 S3 BL
3. PWWSI LOC B4 BL
4. PWWSI LOC B2 BL

[Ordered as individual PWWSI and PWFP items]

PWWSK N485 G3 1S3 2B4 3B2 BL
[Ordered as PWWSK Kit]

WARRANTY

3-year limited warranty. Complete warranty terms located at:
<https://www.acuitybrands.com/support/warranty>

NOTE

Actual performance may differ as a result of end-user environment and application. Specifications subject to change without notice.

ORDERING INFORMATION

INDIVIDUAL WALL STATION INSERTS - PWWSI				EXAMPLE: PWWSI N485 B4 WH			
Series	Network	Control Type	Finish				
PWWSI Pathway Wall Station Inserts	N485 ¹ NSB 485 Master Insert	B2 2 Buttons	BL Matte Black				
	LOC Local Insert	B4 4 Buttons	WH White				
		S1 Single Slider					
		S2 Dual Sliders					
		S3 Triple Sliders					

WALL STATION KITS - PWWSK				EXAMPLE: PWWSK N485 G3 1B4 2S3 3S1 WH							
Series	Network	Size	Wall Station 1	Wall Station 2 ⁴	Wall Station 3 ⁴	Wall Station 4 ⁴	Wall Station 5 ⁴	Wall Station 6 ⁴	Finish		
PWWSK ^{2,3} Pathway Wall Station Kit	N485 NSB 485	G1 1-Gang	1B2 2 Buttons	2B2	3B2	4B2	5B2	6B2	BL Matte Black	WH White	
		G2 2-Gang	1B4 4 Buttons	2B4	3B4	4B4	5B4	6B4			
		G3 3-Gang	1S1 Single Slider	2S1	3S1	4S1	5S1	6S1			
		G4 4-Gang	1S2 Dual Sliders	2S2	3S2	4S2	5S2	6S2			
		G5 5-Gang	1S3 Triple Sliders	2S3	3S3	4S3	5S3	6S3			
		G6 6-Gang									

Notes

- Each Wall Station requires only one 485 Master Insert. Remaining Inserts are LOC.
- PWWSK includes PWFP faceplate in the Size and Finish specified.
- PWWSK simplifies ordering of full wall stations, however will ship as individual items. Kits are not pre-assembled. If ordering using PWWSK, the kit will be broken out into individual lines referencing PWWSI and PWFP items on Sales Order Acknowledgement.
- Specify only the same number of Wallstations as selected Gangs (Size).

OVERVIEW

NSB™, or Networked Sliders and Buttons, is a system of modular, remote button and slider wall station inserts that are designed to be paired with the Cognito² and Choreo lighting control platforms.

Design the exact configuration needed for each wall station, from 1-gang to 6-gang. Each wall station needs only one "Master" Insert (PWWSI N485), which receives data and power; the remaining "Local" inserts (PWWSI LOC) connect together easily and can be re-arranged as needed.

The wall stations are discovered and configured on the Cognito² or Choreo controllers. Each button or slider can be configured to control a recorded memory action on the Choreo or Cognito².

485 models provide an easy way to retrofit venues using older, multi-drop wiring. An NSB 485 system requires the use of an NSB Architectural Gateway (PWGW DIN N), that includes an Ethernet port for configuration and communication with the controller.

When ordering, we recommend using the Pathway **Wall Station Assembly Tool**, a free downloadable software tool that will allow you to visually build the layout of the desired wall station, and generates a list of the catalog numbers needed.

Please note that we cannot provide engraving services.

FEATURES

- Associate buttons and sliders with memories recorded on a Cognito² or Choreo controller on the same network
- Button behavior mimics memory's recorded button actions
- Inserts available in 2 and 4-button, and 1, 2, and 3-slider
- 485 backbone makes retrofits simple and straightforward
- NSB Architectural Gateways can support up to 64 stations divided among 4 separate multi-drop buses
- Attractive design available in Matte Black or White finish
- Compatible with Pathway Faceplates (PWFP)
- Local inserts' positions are swappable; Master Insert must be in the left-most position
- Compression-screw and insulation-displacement contact (IDC) connectors included
- Free downloadable Wall Station Assembly Tool software for straightforward, visual configuration and generates catalog numbers (Win64 and macOS compatible)
- Also available in PoE wiring option (PWWSI NPOE)

SPECIFICATIONS

Electrical

Input Ratings 24VDC over CAT5 or 3-Pair Cable (485)
7.5W maximum power consumption, per station

Cabling Standard CAT5/5e/6 Cable, 492 ft (150 m) maximum, or
Retrofit onto existing 3-pair Belden 9773 or equivalent, 984 ft (300m)
maximum

Regulatory Compliance CE

Mechanical

Dimensions 1.72" W x 4.2" H x 1.67" D (44mm W x 107mm H x 42mm D) [per insert]

Weight 0.2375 lbs (0.1 kg) [per insert]

Environmental

Operating Temperature 14°F to 122°F (-10°C to 50°C)

Relative Humidity 5-95%, non-condensing

Standard Compliance RoHS 2011/65/EU + A1 2015/863

PART NUMBER CROSS-REFERENCE

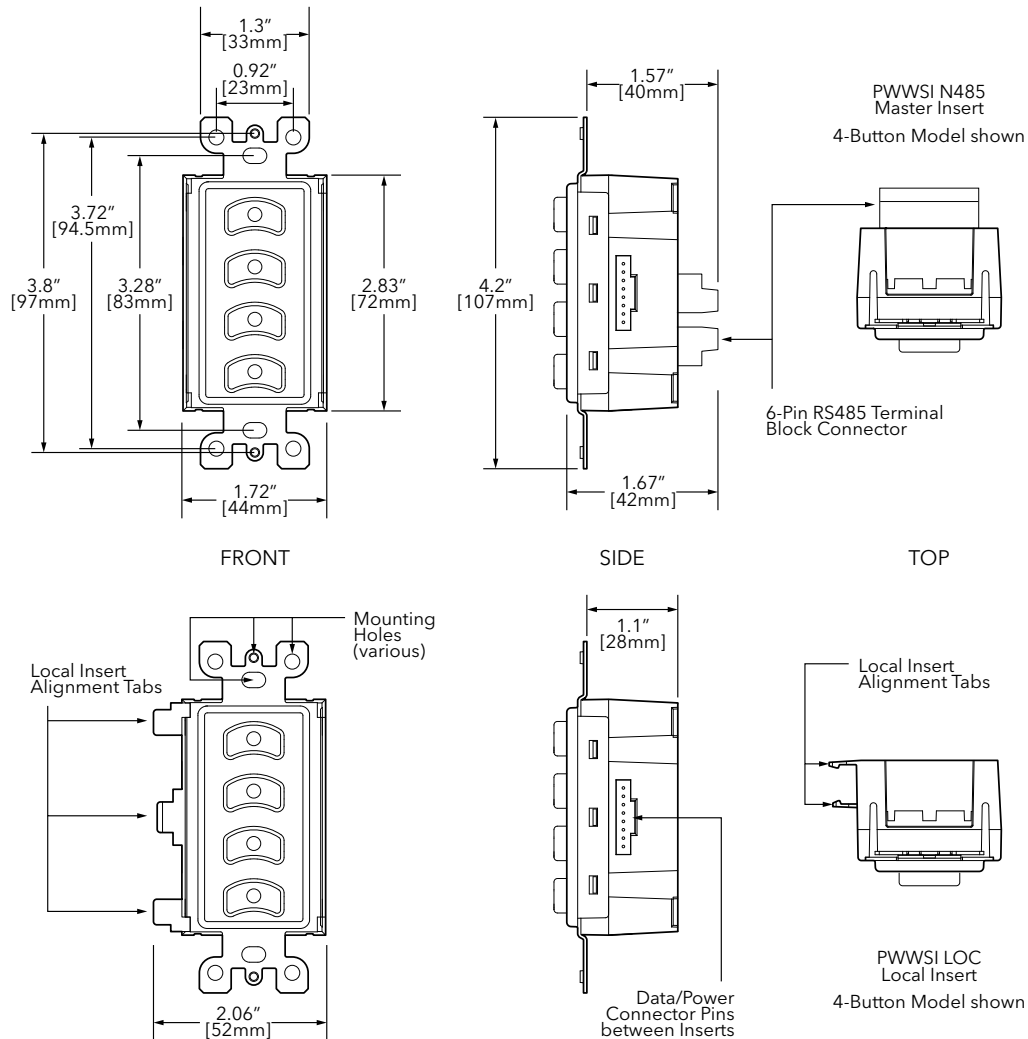
PREVIOUS	NEW	
Part Number	Catalog Number	Description
0700-5331 [BL/WH]	PWWSI N485 B2 [BL/WH]	Wall Station Insert, NSB 485 Master, 2-Buttons, [Black/White]
0700-5332 [BL/WH]	PWWSI N485 B4 [BL/WH]	Wall Station Insert, NSB 485 Master, 4-Buttons, [Black/White]
0700-5333 [BL/WH]	PWWSI N485 S1 [BL/WH]	Wall Station Insert, NSB 485 Master, Single Slider, [Black/White]
0700-5334 [BL/WH]	PWWSI N485 S2 [BL/WH]	Wall Station Insert, NSB 485 Master, Dual Slider, [Black/White]
0700-5335 [BL/WH]	PWWSI N485 S3 [BL/WH]	Wall Station Insert, NSB 485 Master, Triple Slider, [Black/White]
0700-5901 [BL/WH]	PWWSI LOC B2 [BL/WH]	Wall Station Insert, Local, 2-Buttons, [Black/White]
0700-5902 [BL/WH]	PWWSI LOC B4 [BL/WH]	Wall Station Insert, Local, 4-Buttons, [Black/White]
0700-5903 [BL/WH]	PWWSI LOC S1 [BL/WH]	Wall Station Insert, Local, Single Slider, [Black/White]
0700-5904 [BL/WH]	PWWSI LOC S2 [BL/WH]	Wall Station Insert, Local, Dual Slider, [Black/White]
0700-5905 [BL/WH]	PWWSI LOC S3 [BL/WH]	Wall Station Insert, Local, Triple Slider, [Black/White]

ADDITIONAL ORDERING INFORMATION

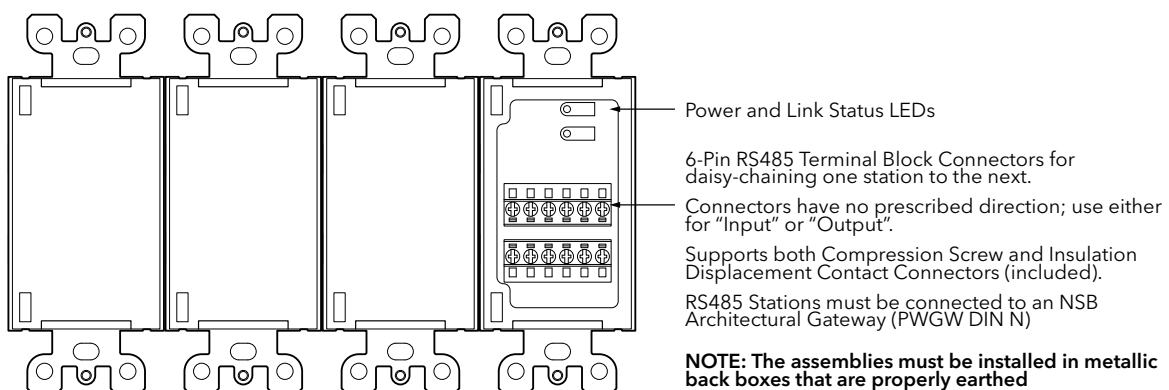
PWFP		EXAMPLE: PWFP G6 BL	
Series	Width	Finish	
PWFP Pathway Faceplates	G1 1-Gang	BL	Matte Black
	G2 2-Gang	SS	Stainless Steel
	G3 3-Gang	WH	White
	G4 4-Gang		
	G5 5-Gang		
	G6 6-Gang		

Accessories	
PWGW DIN N	Architectural Gateway, DIN-mount, NSB (4.5")
PWGW DIN NC8	Architectural Gateway, DIN-mount, NSB w 8 Contact Closures (6.25")
PWGW DIN NC16	Architectural Gateway, DIN-mount, NSB w 16 Contact Closures (8")
PWACC D3G	Pathway Accessory, Stage Manager's 4U rack panel, with dual 3-gang positions

DIMENSIONS



Rear View of Assembled Station



APPLICATION RISER

