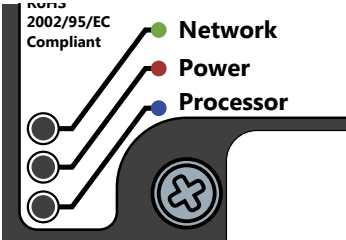


NOTE: Do not install PWCHOREO DIN on a network you do not manage. Firewall and security settings such as MAC Address filtering are the responsibility of the installer.

1. Physically install the controller on the DIN rail.
2. Plug the **included USB Key** into the USB Port. This USB Security Key allows the use of VNC to access the device for configuration. **It must be inserted prior to the controller booting up.**
3. Connect power using the **24VDC power connector** or **connect the Ethernet/PoE RJ45 jack to a PoE Switch**. You should immediately see the red Power LED light solid. Within a few seconds, the blue Processor LED should flash its heartbeat.



4. If the Ethernet cable is connected to a network, the green Network LED may or may not show activity depending on whether your network has a DHCP server on it.
5. On a computer on the same network, launch **Pathscape**. The Choreo DIN should appear in the Devices list. If you don't see the Choreo DIN in the list, proceed to **"When Choreo is not discovered in Pathscape"** below.

Devices				
DMX Patch VLAN Config				
Select View: * DEFAULT VIEW Filter: Search:				
Status	Security Domain	Device Name	Device Type	IP Addr
Online		Choreo	Choreo	10.15.70.39
Online		ChoreoDIN	Choreo DIN	10.15.70.243
Online	pathway	Entrance NSB 4B2S	NSB PoE Station	10.61.9.20

6. Launch a **VNC viewer** such as **Chicken**, **Mocha** or **Tiger** on your PC, smart phone or tablet, which is on the same network and in the **same IP range** as the Choreo DIN. Other VNC clients may work. Make sure they support "touch and drag" if you want to use Choreo's Memory Sliders. Some free clients don't support this feature, but for a fee you can add that feature.

- Remember that the USB Key must be inserted for VNC access to work the first time. See "Optional Configuration" below on how to permanently enable VNC.**
7. Enter the IP address of the Choreo DIN, as shown in the Default View of Pathscape in the IP Address column, where the VNC Client asks for the Host. Leave the Password blank. Set other options as appropriate for your purpose.

VNC Viewer: Connection Details

VNC server: 10.15.70.243

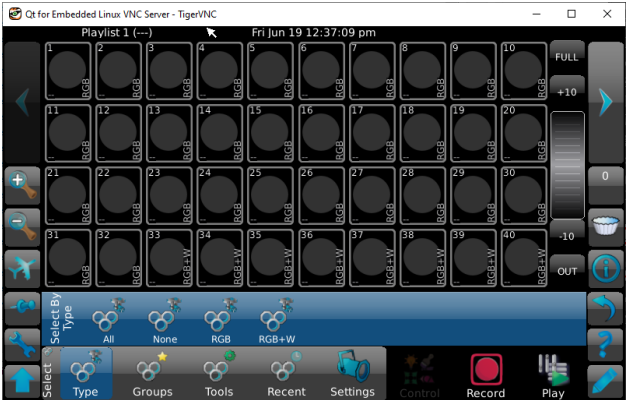
Options... Load... Save As...

About... Cancel Connect

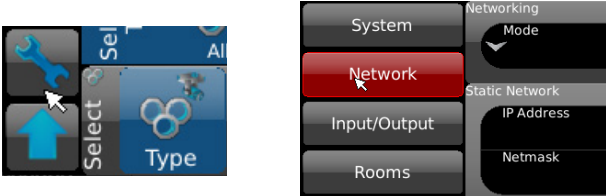
Note: This screenshot is from TigerVNC on Windows. Other VNC clients on other operating systems may look different, but core functionality will be the same.



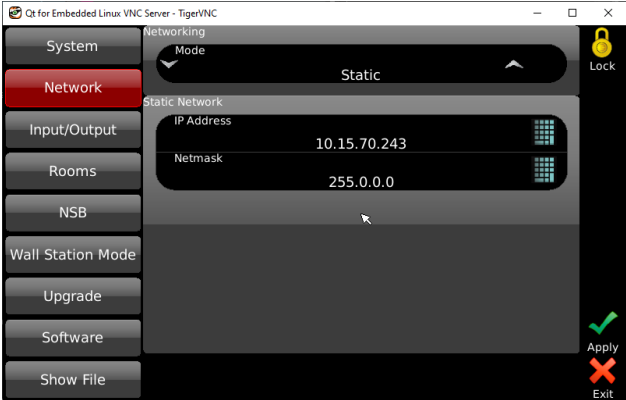
8. Press **Connect** to see the Choreo's Display.



9. Click the **Wrench button** in the bottom-left of the Choreo display to open Setup, then click on **Network**.



10. Change the network settings, such as IP address, if necessary. **Be aware you may lose connectivity through the VNC viewer after saving changes.** You may have to re-establish connection using the new IP address.



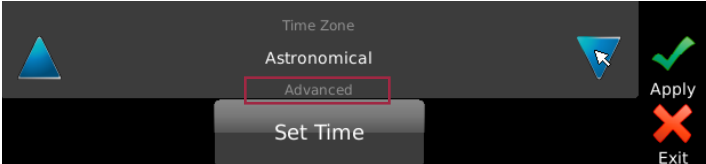
Optional Configuration

To permanently enable VNC access without USB Key:

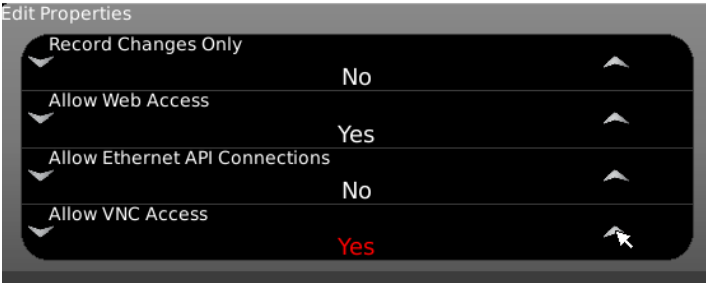
After following the steps above, click on the Wrench Button for the setup menu, then click System.



Click the **Down** arrow in the bottom-right corner of the menu until you see the **Advanced** submenu.



Under the **Allow VNC Access** property, change the value to **Yes**, then click the **Apply** button.



VNC Access is now permanently enabled. The USB key is no longer required to be inserted in order to access Choreo DIN by VNC.

To restrict VNC Access after Choreo DIN Programming:

You may want to lock down VNC access after the programming of the controller is complete.

Under the **Allow VNC Access** property shown above, change the value to **No** if previously set to Yes. **Unplug the USB Key** if previously inserted.

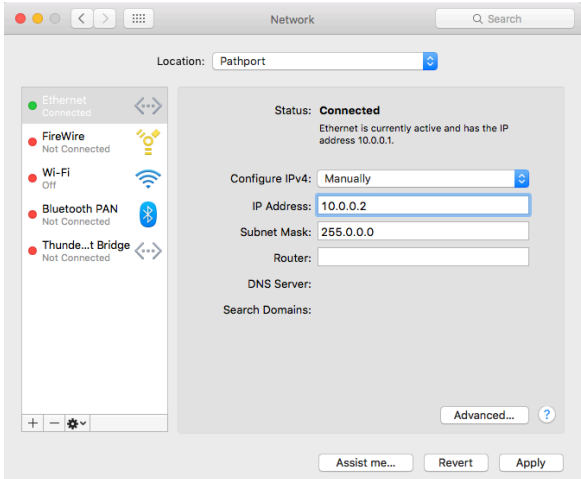
Reboot the controller by clicking on the **Shift (Up) Arrow**, then click the **Wrench Button** to access the Reboot menu, and click the **Reboot Button** to restart the device.



Once the controller reboots, VNC Access will be disabled. To regain VNC Access, reboot the device and follow the instructions from Step 2 above.

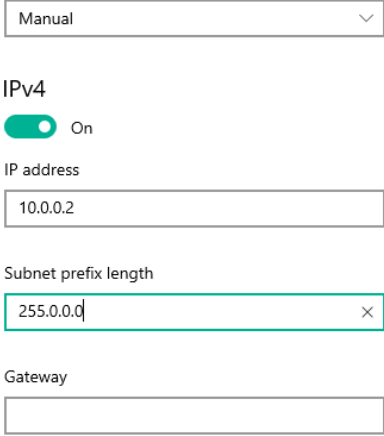
When Choreo is not discovered in Pathscope

1. If **Choreo DIN is not discovered** in the Devices list of Pathscope, the IP address setting on your PC does not match Choreo's. Open your PC's IP settings and manually set the IP address to 10.0.0.2 with a Subnet Mask of 255.0.0.0. Do not enter a gateway or router address.



macOS

Edit IP settings



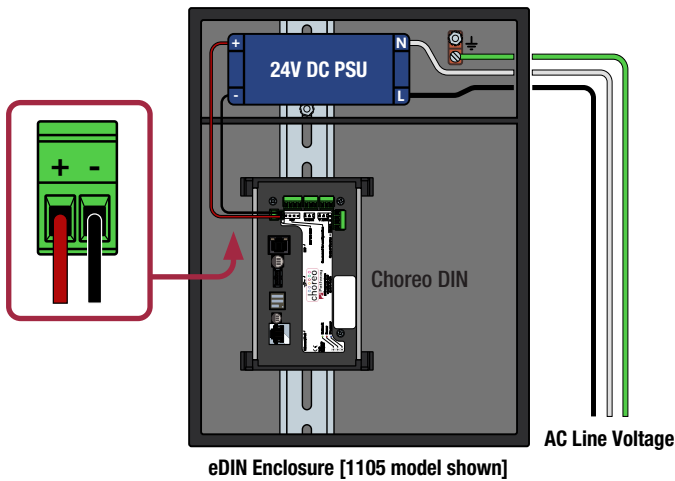
Windows

2. As Choreo DIN is shipped with a static "Pathport" IP of 10.x.y.z, it should now appear in the list when you relaunch Pathscope. Continue from Step 4 above.

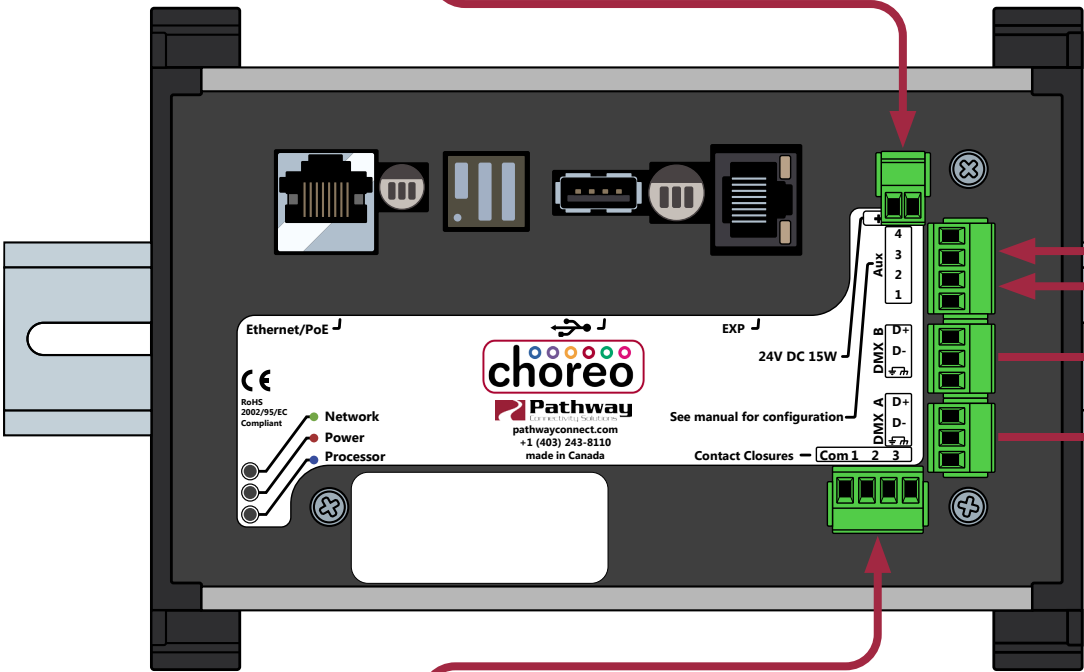
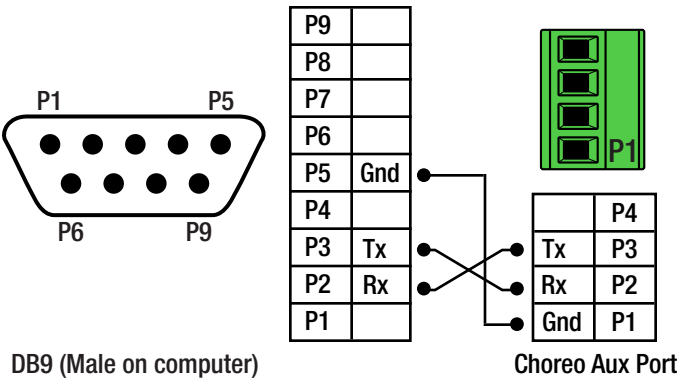
Electrical Connections

Use the small screwdriver supplied with your Choreo DIN to make connections to the pluggable terminal strips.

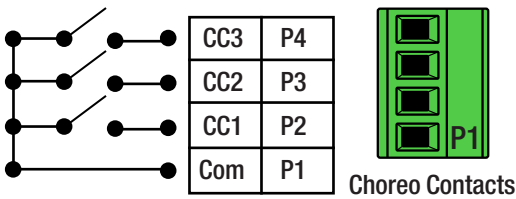
Power Connections (if not using PoE)



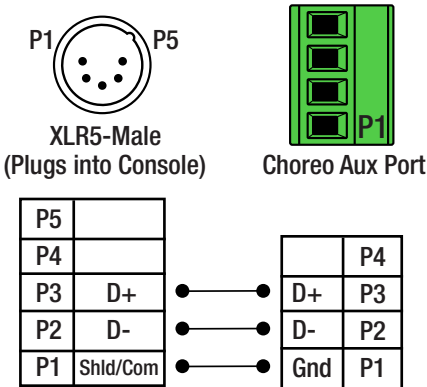
Serial RS-232 (9600,N,8,1)



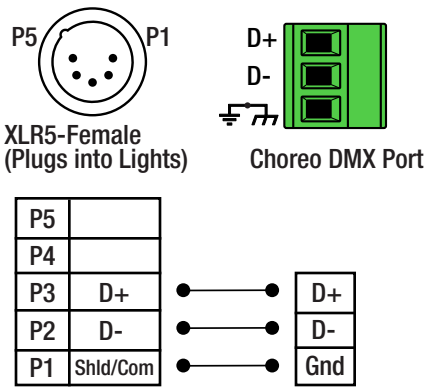
Contact Closures



DMX In using Aux Port

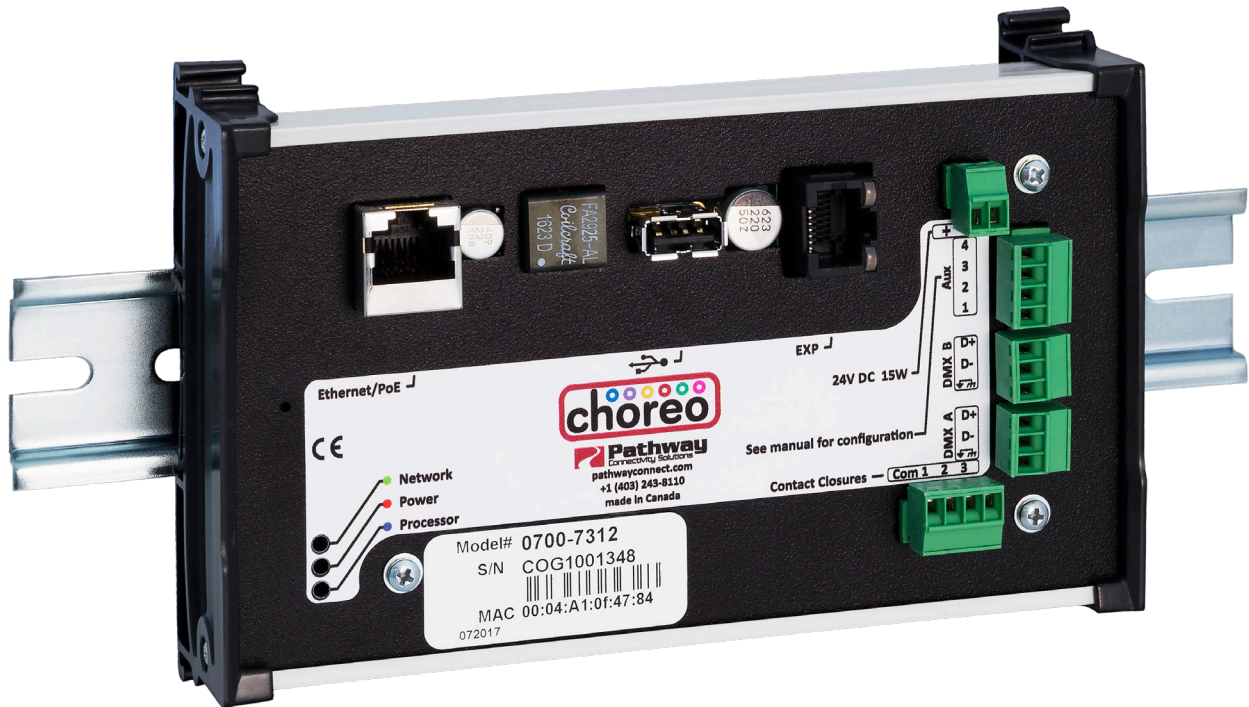


DMX A & DMX B



Included in the box

- Choreo Architectural Controller in DIN mounting assembly
- screwdriver
- pluggable terminal strips (5 - installed on Choreo DIN)
- plug for EXP RJ45 socket (installed)



READ AND FOLLOW ALL SAFETY INSTRUCTIONS!
SAVE THESE INSTRUCTIONS AND DELIVER TO OWNER AFTER INSTALLATION

- To reduce the risk of death, personal injury or property damage from fire, electric shock, falling parts, cuts/abrasions, and other hazards please read all warnings and instructions included with and on the fixture box and all fixture labels.
- Before installing, servicing, or performing routine maintenance upon this equipment, follow these general precautions.
- Installation and service should be performed by a qualified licensed electrician.
- Maintenance should be performed by qualified person(s) familiar with the products' construction and operation and any hazards involved. Regular maintenance programs are recommended.
- DO NOT INSTALL DAMAGED PRODUCT! This product has been properly packed so that no parts should have been damaged during transit. Inspect to confirm. Any part damaged or broken during or after assembly should be replaced.
- These instructions do not purport to cover all details or variations in equipment nor to provide every possible contingency to meet in connection with installation, operation, or maintenance. Should further information be desired or should particular problems arise which are not covered sufficiently for the purchaser's or owner's purposes, this matter should be referred to Pathway Connectivity.



WARNING: RISK OF ELECTRIC SHOCK

- Disconnect or turn off power before installation or servicing.
- Verify that supply voltage is correct by comparing it with the product information.
- Make all electrical and grounded connections in accordance with the National Electrical Code (NEC) and any applicable local code requirements.
- All wiring connections should be capped with UL approved recognized wire connectors.
- All unused connector openings must be capped.



WARNING: RISK OF BURN OR FIRE

- Do not exceed maximum wattage, ratings, or published operating conditions of product.
- Do not overload.
- Follow all manufacturer's warnings, recommendations and restrictions to ensure proper operation of product.



WARNING: RISK OF INJURY

- Wear gloves and safety glasses at all times when installing, servicing or performing maintenance.



CAUTION: RISK OF PRODUCT DAMAGE

- Electrostatic Discharge (ESD): ESD can damage product(s). Personal grounding equipment must be worn during all installation and servicing of the unit.
- Do not touch individual electrical components as this can cause ESD and affect product performance.
- Do not stretch or use cable sets that are too short or are of insufficient length.
- Do not tamper with contacts.
- Do not modify the product.
- Do not change or alter internal wiring or installation circuitry.
- Do not use product for anything other than its intended use.
- If installing wiring systems: Materials and component parts of a manufacturing wiring system as described in Article 604 of the National Electric Code and Underwriters Laboratories Standard for Safety #183 MUST BE installed.
- For interior use only. Not for damp or wet locations. See data sheet for ambient temperature and humidity operating conditions.

Failure to follow any of these instructions could void product warranties. For a complete listing of product Terms and Conditions, please visit www.pathwayconnect.com.