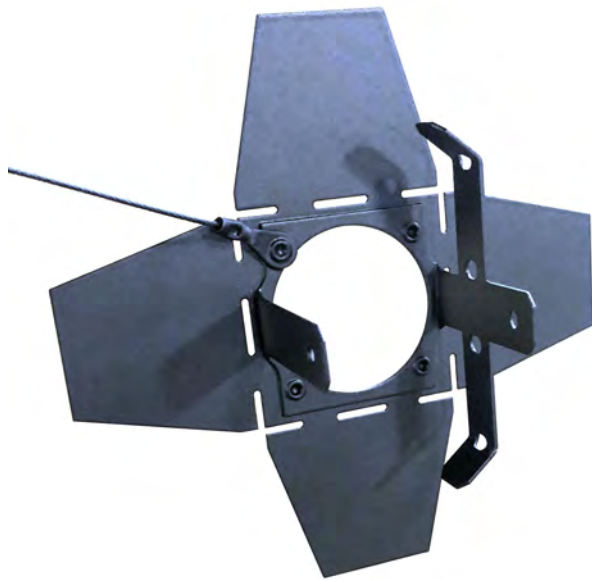


## City Theatrical's Custom Work December 2020

Although City Theatrical manufactures a large catalog of unique lighting accessories, we also like to do custom work, and can do it incredibly quickly. If you need a custom design or fabrication of metal lighting products, electronic design, LED power supplies, custom wireless DMX installations, or nearly any other challenge that you can come up with, call us and we will help you through it. We've done custom work for major TV networks, theme parks, museums, architectural projects, and just about any other type of lighting project you can imagine.



### Custom Gantom DMX Spot Barndoors

**Project Type:** Entertainment

**Fixture Type:** Gantom DMX Spot

**Challenge:** The client required custom Barndoors to fit Gantom DMX Spot lighting fixtures and provide beam control.

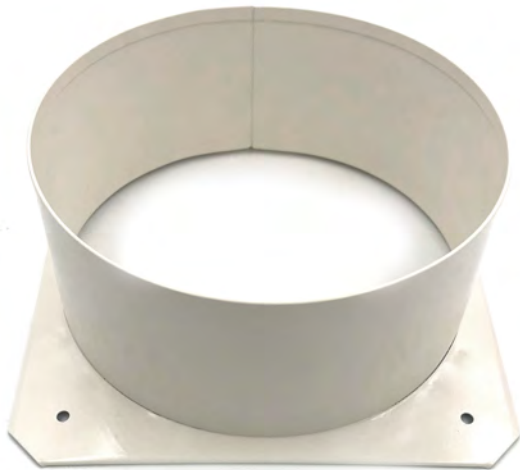
**Solution:** City Theatrical custom manufactured the Barndoors to meet the size specifications to fit the desired lighting fixtures and provide the beam control expected of City Theatrical lighting accessories.

**Material:** Steel

(Click to enlarge images)



### Custom Painted Top Hats



**Project Type:** Theatrical

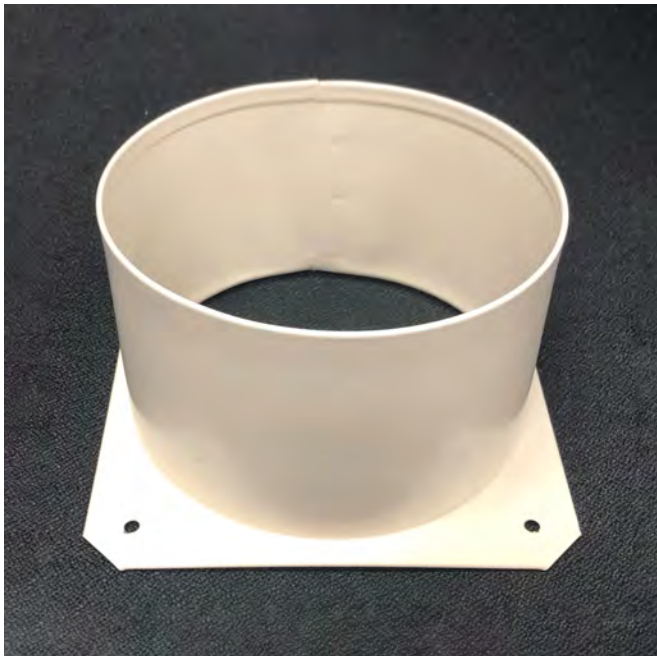
**Fixture Type:** ETC Source 4 PAR

**Challenge:** The client required standard Short [Top Hats](#) (P/N 2481) to provide beam control for ETC Source 4 fixtures but required them to be painted white, in order to blend in with the surrounding fixture and walls.

**Solution:** City Theatrical custom manufactured the short Top Hats to meet the white color desired by the client and beam control functionality expected of Standard Top Hats.

**Material:** Steel

(Click to enlarge images)



### Custom Painted Top Hats

**Project Type:** Theatrical

**Fixture Type:** ETC D22

**Challenge:** The client required standard Short [Top Hats](#) (P/N 2590) to provide beam control for ETC D22 fixtures but required them to be painted white, in order to blend in with the surrounding fixture and walls.

**Solution:** City Theatrical custom manufactured the short Top Hats to meet the white color desired by the client and beam control functionality expected of Standard Top Hats.

**Material:** Steel

(Click to enlarge image)

### Custom Color Frames



**Project Type:** Film & Video

**Fixture Type:** [Ikan Lighting for Video Production](#)

**Challenge:** The client required City Theatrical [Color Frames](#) to fit the specifications of the desired Ikan lighting fixtures for video production.

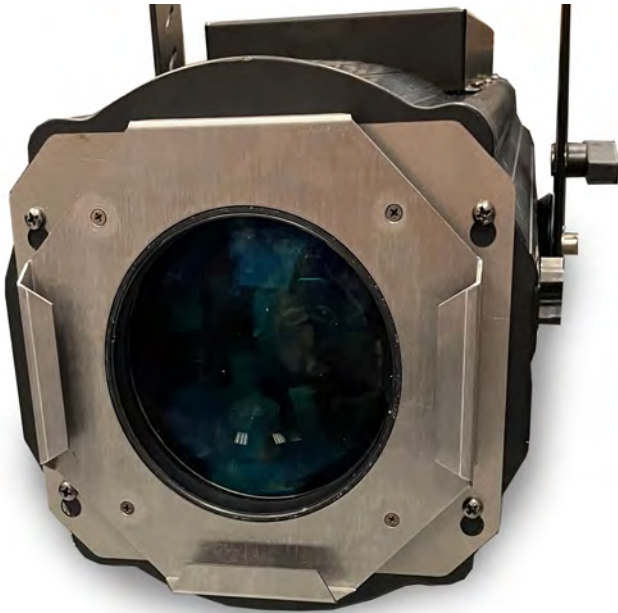
**Solution:** City Theatrical custom manufactured the Color Frames to meet the Ikan fixture sizing necessary for the film project.

**Material:** Aluminum

(Click to enlarge image)

---

### Custom Adapters



**Project Type:** Theatrical

**Fixture Type:** [Mega Lite Drama](#)

**Challenge:** The client required City Theatrical [Adapters](#) to enable them to use a City Theatrical 6 1/4" [Drop-in-Boomerang](#) (P/N 1410).

**Solution:** City Theatrical custom manufactured the Adapters to meet the desired Mega Lite fixture sizing necessary for the production.

**Material:** Steel

(Click to enlarge images)

