



## City Theatrical's Custom Work August 2018

Although City Theatrical manufactures a large catalog of unique lighting accessories, we also like to do custom work, and can do it incredibly quickly. If you need a custom design or fabrication of metal lighting products, electronic design, LED power supplies, custom wireless DMX installations, or nearly any other challenge that you can come up with, call us and we will help you through it. We've done custom work for major TV networks, theme parks, museums, architectural projects, and just about any other type of lighting project you can imagine.



### Custom Top Hats

**Project Type:** Entertainment

**Challenge:** Client needed a full Top Hat with larger holes on the frame than those that our standard Top Hats offer.

**Solution:** We made custom Top Hats with holes to meet the specifications provided by the client.

**Material:** Steel



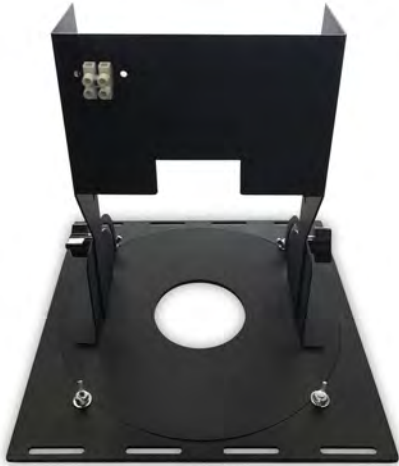
### Custom Dimmers

**Project Type:** Theme Park

**Challenge:** Client needed a custom ETL listed Dimmer solution to control LED tape in a major Theme Park.

**Solution:** We designed and custom built two Architectural LED Dimmers with power supplies and output connectors in a permanent enclosure.

**Material:** Steel



### Custom Ceiling Ports

**Project Type:** Architectural Installation for a New York City restaurant

**Challenge:** Client needed custom Ceiling Ports to enable small lighting fixtures to be used as downlights with only a very small hole in the ceiling.

**Solution:** We fabricated custom Ceiling Ports with modified lens holders.

**Material:** Steel

---



### Custom Top Hats

**Project Type:** Architectural

**Fixture Type:** PAR 16

**Challenge:** Client needed custom Top Hats to fit a PAR 16 fixture.

**Solution:** We designed and built custom Top Hats to fit the fixture's small dimensions.

**Material:** Steel

---



### Custom GLP X4 Hexcel Louvers

**Project Type:** Architectural

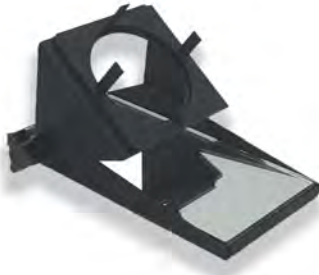
**Fixture Type:** GLP X4

**Challenge:** Client needed custom Hexcel Louvers to fit a GLP X4 fixture for an architectural installation.

**Solution:** We designed and fabricated a custom Hexcel Louvers that provided a sleek appearance while also delivering beam control.

**Material:** Steel

### Custom Beam Benders



**Project Type:** Architectural

**Challenge:** Client needed a Beam Bender for an S4 Mini with a unique attachment method.

**Solution:** We designed and fabricated custom Beam Benders that attached to the fixture's lens tube in a proprietary manner as required by the designer.

**Material:** Steel

---

### Custom Concentric Rings



**Project Type:** Entertainment

**Fixture Type:** Rush PAR 2

**Challenge:** Client needed Concentric Rings that could fit a Rush PAR 2 fixture.

**Solution:** We made custom Concentric Rings that would fit the fixture for the installation.

**Material:** Steel

---

### Custom Top Hats



**Project Type:** Broadway

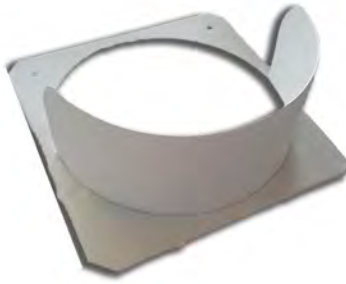
**Fixture Type:** GLP X4

**Challenge:** Client needed Top Hats for GLP X4 fixtures to be used in a new Broadway show.

**Solution:** We made custom Top Hats for the client before the show began production.

**Material:** Steel

### Custom Half Top Hats



**Project Type:** Architectural

**Challenge:** Client needed a standard Half Top Hat to be painted white to blend in with the surrounding architecture.

**Solution:** We custom painted our standard Half Top Hats to meet the client's specifications.

**Material:** Steel

---

### Custom Cable Hooks



**Project Type:** Theme Park

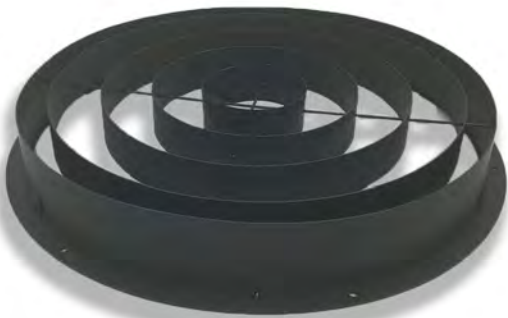
**Challenge:** Client needed Cable Hooks in a specific size, shape, and matte RAL color.

**Solution:** We designed, prototyped, and fabricated hundreds of custom cable hooks to meet the client's specifications.

**Material:** Aluminum

---

### Custom Concentric Rings



**Project Type:** Broadway

**Challenge:** Client needed custom Concentric Rings to create a 45° cutoff for full control of stray beams and spill for a Broadway show.

**Solution:** We built custom Concentric Rings to ensure that the Lighting Designer could achieve the desired look before the show went into production.

**Material:** Aluminum