

iW[®] Blast TR Lighting Kit

Our iW Blast TR Lighting Kit features bright white LEDs with color temperature variable from 2700K to 6500K that you can set yourself right on the controller. A full lighting kit that sets up in minutes with all the versatility you need for location lighting. Low power consumption, interchangeable lenses, barndoors and louvers, adjustable stands and a rugged ATA rated flight case are all included in the kit.

CITY
THEATRICAL
NEW YORK • LONDON



iW Blast TR Lighting Kit

Components



iW Blast 12 TR Fixture

The iW Blast 12 TR is the heart of our lighting kit. The iW Blast 12 TR features 36 high intensity warm/cool LEDs that allow you to vary your color temperature from 2700K to 6500K. These fixtures are compact, robust, and built for harsh everyday use. We've made them even better by adapting them for use in professional lighting by making a range of parts and accessories previously unavailable which allow the fixtures to be used in ways specific to film/video and photography lighting users.

Each kit contains three iW Blast TR fixtures, and kits are available without fixtures if you are providing your own. We do not sell fixtures alone. They must be purchased with a minimum of an iW Controller. For individual fixtures, please contact your Philips Color Kinetics distributor.



Blast 12 Symmetric and Asymmetric Lens Kits

City Theatrical has developed these unique lens kits specifically for the Philips Color Kinetics ColorBlast 12 TR and iW Blast 12 TR LED lighting fixtures. Our lenses are unbreakable polycarbonate, and utilize a holographic method to create various beam spreads. Our Symmetric set contains five lenses, 10°, 20°, 30°, 40°, and 60°. Our Asymmetric set contains four lenses: 30° x 1°, 30° x 5°, 40° x .2°, and 60° x 10°. A good visual representation of their relative sizes can be found on our website. City Theatrical polycarbonate holographic lenses are for indoor use only.

Each kit contains three sets of Symmetric Lenses and three sets of Asymmetric Lenses.



8' Stand with 5/8" Pin

We designed these light but very durable adjustable lighting stands to meet the needs of this lighting kit. Strong and stable and able to reach a height of eight ft. (2.43m) these stands will provide a stable base for your iW Blast 12 TR fixtures. The stands are supplied with a 5/8" pin that mates with our custom mounting base for the fixture (shown at right).

Each kit contains three 8' Stands.



Mounting Base for 5/8" Pin

This mounting base (a City Theatrical exclusive) allows your iW Blast 12 TR to be mounted to the 8' Stand with 5/8" Pin. By first removing the adjustable foot that comes on the back of the Philips Color Kinetics fixture and then replacing it with this Mounting Base, the iW Blast 12 TR can then be stand mounted.

Each kit contains three Mounting Bases for 5/8" pin.

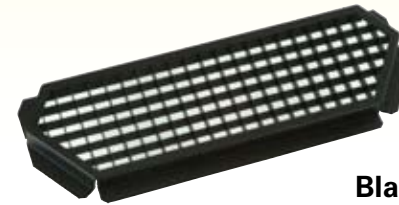
Powerful Philips Color Kinetics white LEDs built into a versatile lighting kit!



Blast 12 TR Barn Door

This is a classic lighting barn door made specifically for the iW Blast 12 TR (or the ColorBlast 12 TR). It snaps on in seconds with no tools or fasteners and allows some beam shaping, as well as a convenient place to mount other accessories that you may wish to use to shape or diffuse the beam. An integral safety cable is included.

Each kit contains three Barn Doors.



Blast 12 TR Egg Crate Louver

Our Egg Crate Louver helps prevent a bright glare in the eyes of your subjects, the audience, or the camera. It can be used with the Barn Door or by itself and also attaches with no fasteners in just seconds.

Each kit contains three Egg Crate Louvers.



iW Controller

The iW Controller was invented by CityTheatrical and is the only stand-alone controller for the iW Blast 12 TR. This Controller clamps onto the lighting stand with its included clamp, and gives you control of intensity and color temperature right at the point of use. The iW Blast 12 TR connects to the iW Controller via its four pin XLR connector, and an IEC connector feeds line voltage (100/240 VAC 50/60 Hz) to the iW Controller. A lighted on-off switch controls power. A four pin XLR female on the bottom of the controller allows connection to a CityTheatrical 24V Battery Base for battery powered operation. Battery Base, Battery Cable and Battery Chargers are sold separately. (see below)

*Each iW Controller controls one iW Blast 12 TR fixture.
Each kit contains three iW Controllers.*

Add Battery Power to your Kit

Add a Battery Base (PN5640), Battery Cable (PN6355), and Battery Charger (PN5640) to your kit and get up to three hours of lighting time at full output.

These parts are not included in the kit and are sold separately.



iW Blast Three Unit Case

This rugged ATA rated flight case holds all of the parts of the three light kit securely and safely during transport. The dimensions of the case are 47" x 24" x 11.5" (119.4cm x 60.9cm x 29.2cm) and the fully loaded case weighs 105 lbs. (47.5kg).

Each kit includes one iW Blast Three Unit Case.

iW Blast TR Lighting Kit

System Features:

- (3) Philips Color Kinetics iW Blast 12TR, equipped with CTITV/Film Mounting Brackets
- (3) iW Controllers
- (3) CTITV/Film Stands
- (3) CTI Nine-Piece Polycarbonate Holographic Lens Set
- (3) CTI Blast 12TR Louvers
- (3) CTI Blast 12TR Barndoors

iW Controller Features:

- Rugged NEMA 1 steel and aluminum case
- Lighted power switch
- Faders for Level and Color Temperature
- Control and power for one iW Blast 12TR
- IEC inlet for mains power (100/240 VAC 50/60 Hz)
- 4P XLR M for battery power (battery and battery cable optional)
- 4P XLR F for connection to iW Blast 12TR
- Integral stand mount
- Certifications: GTL, CETL, CE

iW Blast 12TR Features

- Beam Angle: 10° to 60° (w/CTI lenses)
- Color temperature 2700K to 6500K
- CRI: 83 warm, 74 cool, 83 both
- Efficacy (Lm/w): 33.6 (10° beam angle)
- Power consumption: 50W
- Lumens output: 1679 lumens (10° beam angle)
- For complete fixture data consult Philips Color Kinetics website

Available Optional Accessories:

- CTI 12/24V Battery Base, CTI Battery Base Adaptor Cable for iW Controller, CTI Battery Charger

CITY
THEATRICAL
NEW YORK • LONDON

475 BARELL AVENUE, CARLSTADT, NJ 07072
800/230/9497 201/549/1160 201/549/1161 FAX
www.citytheatrical.com

Parts and Accessories	Cat. #
iW Blast TR Lighting Kit	6300
iW Blast TR Lighting Kit without Fixtures	6301
iW Blast TR Lighting Kit (Single)	6302
iW Blast TR Lighting Kit (Single) without Fixture	6303

Need more information? Contact our sales department at 201-549-1160, or in Europe at +44 (0) 20 8949 5051.

Replacement Parts and Accessories	Cat. #
Blast 12 TR Symmetric Lens Kit	6320
Blast 12 TR Asymmetric Lens Kit	6321
8' Stand with 5/8" Pin	6330
Mounting Base for 5/8" Pin	6335
Blast 12 TR Barndoor	6340
Blast 12 TR Egg Crate Louver	6346
iW Controller	6350
iW Blast Three Unit Case	6360
iW Blast 12 TR Fixture (sold only as part of a kit, not individually)	6365
Battery Base 12/24V*	6280
iW Controller 24V Battery Cable*	6355
12V 5A Autocharger 115V-230V, with Connectors*	5640
Twofer, 18" with Anderson Connectors*	5656

*These parts are not included in the kit and are sold separately.

