

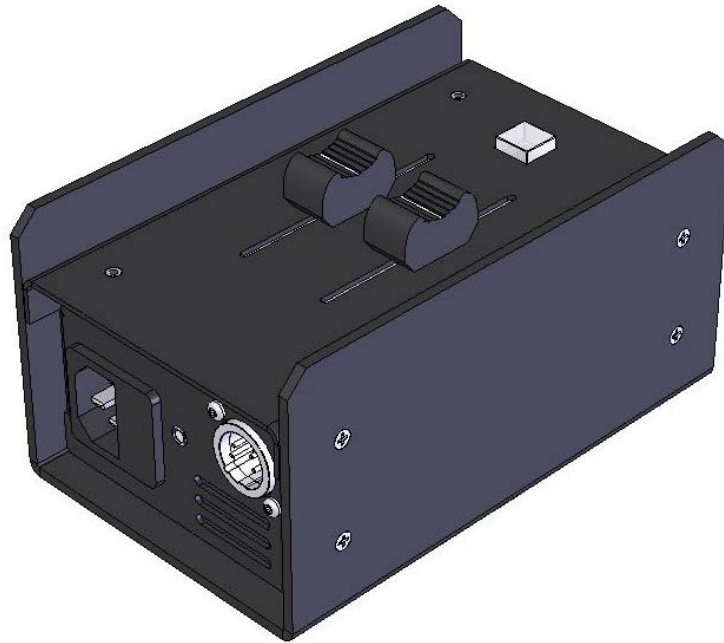
CITY

THEATRICAL

I N C

iW Blast® 12 TR Controller/Power Supply Owner's Manual

Rev 1.0 © 2008 City Theatrical Inc



475 Barell Avenue, Carlstadt, NJ 07072
201/549/1160 FAX: 201/549/1161
www.citytheatrical.com

CONTENTS

Revisions2
Cautions.....2
Compliance Information3
Introduction4
Connecting and setting up the 6350 iW Blast 12 TR Controller/Power Supply4
Operating the 6350 iW Blast 12 TR Controller/Power Supply5
CKDMX 4 Pin XLR Pin-out5

Revisions

- Rev 0.1 Pre-release
- Rev 0.2 Format
- Rev 1.0 Initial production release 12-16-08

Cautions

The CTI iW Blast 12 TR Controller Power/Supply is intended for use only by qualified professionals. Connection and installation of this equipment must be performed in accordance with all pertinent local, regional and national safety codes and regulations.

The CTI iW Blast 12 TR Controller Power/Supply is intended for indoor use only.

Keep the unit dry! Do not operate the unit if it gets wet!

Maximum ambient operating temperature of 40°C.

Be sure installation provides adequate space for operation. Both ends of the unit must be clear of obstruction to allow for proper air circulation.

When used with mains power, the mains socket-outlet shall be installed near the equipment and shall be easily accessible.

There are no user-serviceable parts inside! Refer to qualified service personnel!

The iW Blast 12 TR Controller/Power Supply

Compliance Information



The City Theatrical 6350 iW Blast 12 TR Controller Power/Supply is CE Certified

Standards Applied:

EN 55103-1, EN55103-2
EN 60950-1:2006

Product Conforms to CE Marking Directive 93/68/EEC

The City Theatrical 6350 iW Blast 12 TR Controller Power/Supply is RoHS compliant



The City Theatrical 6350 iW Blast 12 TR Controller Power/Supply is ETL and cETL Listed and conforms to UL STD 508A and is certified to CAN/CSA STD C22.2 NO. 14-95

Introduction

Thank you for using the City Theatrical iW Blast 12 TR Controller/Power Supply! Every effort has been made to anticipate your questions in this manual, but if you have any questions that we don't answer here, or you want to discuss a special application, please feel free to contact us directly at City Theatrical.

The City Theatrical 6350 iW Blast 12 TR Controller Power/Supply is designed for use with the Philips Color Kinetics iW Blast 12 TR, and is the latest member of the CTI family of power/data supplies for Philips Color Kinetics solid state lighting fixtures. The CTI iW Blast 12 TR Controller Power/Supply incorporates all of the innovative features and rugged design qualities that have made CTI's PDS products an indispensable part of the exciting new world of LED Lighting.

The CTI iW Blast 12 TR Controller Power/Supply features color temperature and intensity controls and an On/Off button, 100-240VAC 50/60 Hz and 24VDC Power inputs, and a CKDMX power/data output for one iW Blast 12 TR. The Controller Power/Supply is housed in a rugged NEMA 1 steel and aluminum case with a built-in mounting clamp for attachment to the fixture stand. The iW Blast 12 TR Controller Power/Supply can be run with 100-240VAC mains power or with a CTI 6280 12/24VDC Battery Base.

Connecting and setting up the 6350 iW Blast 12 TR Controller/Power Supply

Connecting and setting up the iW Blast TR Controller/Power Supply is simple:

1. If stand mounting is desired, mount the Controller Power/Supply on the stand using the built-in mounting clamp on the back of the unit (see figure 1). Be careful not to over-tighten.
2. Connect the iW Blast 4P XLR Control/Power cable to the CKDMX Output (see figure 1).
3. Connect the provided IEC mains cable to the Mains Power Inlet (see figure 2), and plug the power cable's mains connector into a mains outlet. The POWER LED will light steadily.
4. Optionally, you can power the unit with a CTI 6280 Battery Base using a 6355 24V Battery Cable¹.

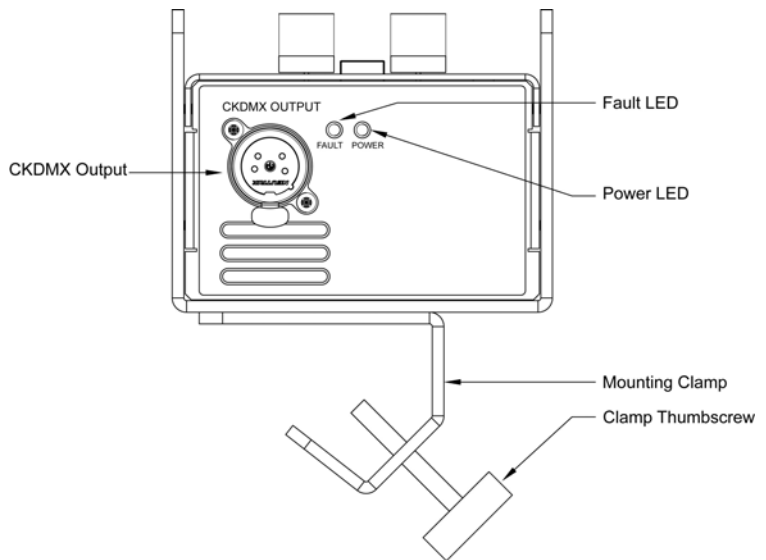


Figure 1, iW Blast 12 TR Controller, top view

Connect the Battery Cable's Anderson Connector to the Battery Base, and connect the

¹ Battery Base and Battery Cable (not included) are available options, contact City Theatrical or your authorized dealer for details

The iW Blast 12 TR Controller/Power Supply

Battery Cable's 4PXL R to the 24VDC POWER INPUT (see figure 2). The POWER LED will light steadily.

- When the unit is powered from a CTI # 6280 Battery base, the POWER LED (See figure 1) will begin to blink when the battery is low and needs to be recharged.

Battery power voltage: The iW Blast 12 TR Controller/Power Supply is designed to operate on 24VDC Battery power only. Do not attempt to power the unit directly with higher voltage batteries as damage the unit, and/or damage to the connected Philips CK iW Blast fixture may result.

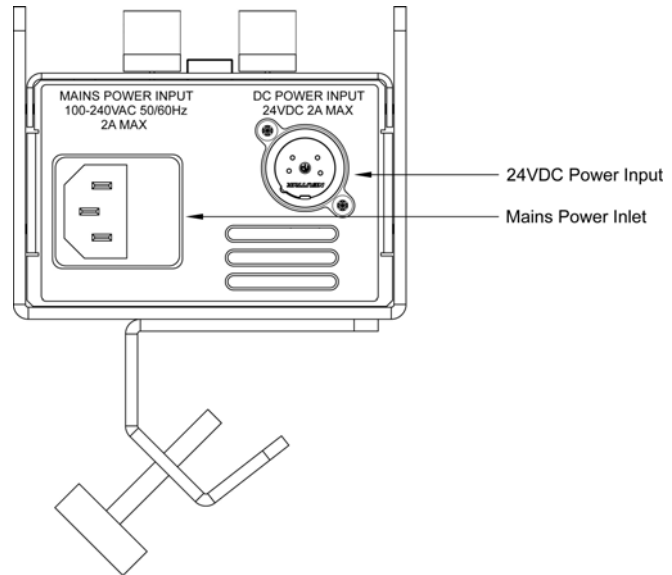


Figure 2, iW Blast 12 TR Controller, bottom view

Operating the 6350 iW Blast 12 TR Controller/Power Supply

Operating the iWhite Controller is also simple:

- Turn the power on and enable the system by pressing the POWER Button. The POWER Button will light to indicate that the system is on.
- Slide the LEVEL Fader up to raise the level of the iW Blast, and slide the LEVEL Fader down to lower the level of the iW Blast.
- Adjust the color temperature of the iWhite Blast by sliding the COLOR Fader up or down. The iW Blast TR can be adjusted with the iW Controller from its warmest (2700K) to its coolest (6000K) color temperature with this Fader.

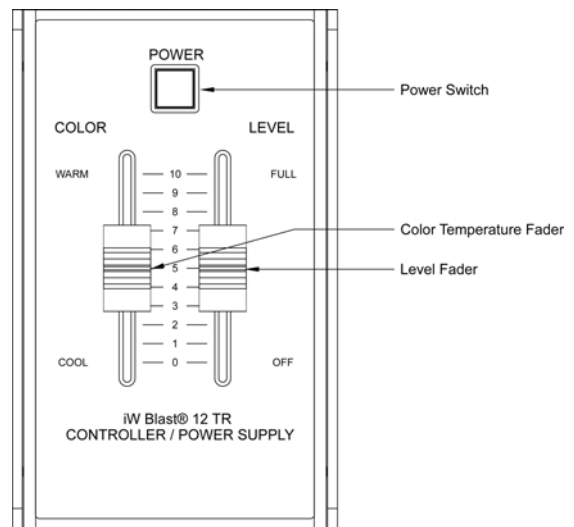


Figure 3, iW Blast 12 TR Controller, front view

CKDMX 4 Pin XLR Pin-out

Pin #	Signal	Color
1	+24VDC	Red
2	n/c	
3	Data	White
4	DC Common	Black