

1253 Adapter, 6.25" to 6.625"
(158.75mm x 168.275mm) Source
Four to Scrim (for film projects)

Adapter for Film Lighting Projects

Designed for Film, the 1253 Adapter is Connect Source Four Fixtures to Scrim

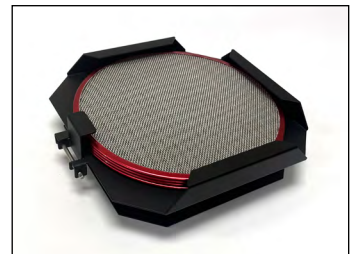
City Theatrical designed the Adapter, 6.25" to 6.625" (158.75mm x 168.275mm) Source Four to Scrim (P/N 1253) for the needs of film lighting projects.

You can use it to connect one or multiple scrims to an ETC Source Four lighting fixture with an EDLT or Standard lens, in order to achieve the lighting looks desired for your film & video project.

City Theatrical Adapters can extend the use of your stock, and save you money. Find out more about this and other Adapter solutions on our website.



Adapter holding one scrim



Adapter holding four scrims

The 1253 Adapter fits Source Four fixtures with an EDLT or Standard lens to attach one or more scrims over the light output.



1253 Adapter



Scrim