

**PROFESSIONAL EXPERIENCE**

City Theatrical's [QolorFLEX](#)<sup>®</sup> brand of [LED tape lighting](#) is widely recognized for its superior quality, versatility and variety. Created specifically for lighting professionals working in theatrical, television and film, and architectural applications, our goal was to produce a premium product line offering designers a variety of configurations of tape that could be incorporated into their projects easily, with a premium line of 40+ LED tapes that are all ETL listed, CE certified and RoHS compliant. QolorFLEX LED Tape is now used on hundreds of productions and in environments across the globe, including those listed below.

**QOLORFLEX LED TAPE & DIMMER SOLUTIONS**

Click on an icon below to learn more about the combined QolorFLEX LED Tape and Dimmer solution used for the theatrical, television, or architainment project.

**THEATRE**



*Jagged Little Pill*



*Hadestown*



*Who's Afraid of Virginia Woolf?*



*A Soldier's Play*



*Frozen Australia*



The Joyce Theater in New York,  
New York



*Pip's Island*



Rutgers Theater Company, MFA  
Playwriting Festival

**LIVE EVENTS AND TELEVISION**



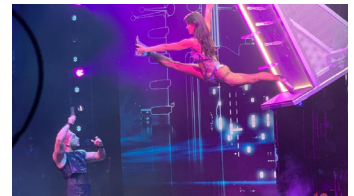
*After Midnight*, filmed  
at the Signature Theatre



Democratic National  
Convention 2020

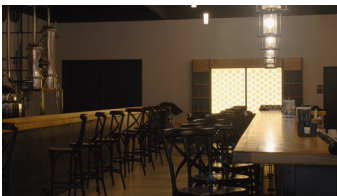


ESPN Studio Y in  
Bristol, Connecticut

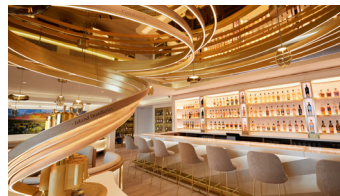


*America's Got Talent*,  
Deadly Games performance

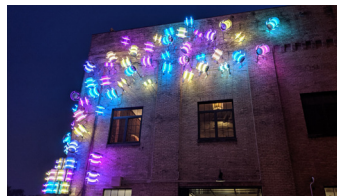
**ARCHITAINMENT**



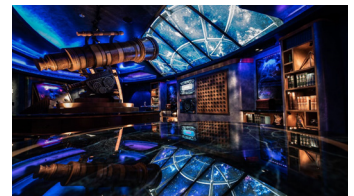
Olde Raleigh Distillery in  
Zebulon, North Carolina



Johnnie Walker at Princes  
Street in Edinburgh, Scotland



Kegnado Installation at Lakefront  
Brewery in Milwaukee, Wisconsin



Royal Caribbean's  
Observatory



Watch our [QolorFLEX Playlist](#) on YouTube.

**QOLORFLEX  
LED TAPE  
SOLUTIONS**

**PROFESSIONAL EXPERIENCE**

The [QolorFLEX LED Tape](#) line includes 40+ types of high quality tape that add distinction to any designer's toolkit. Available in 12 and 24 volt and indoor and outdoor configurations, our white tapes range in color temperature from warm white, at 2700° K, to daylight, at 6500° K. Our three color tapes, like RGB, and four color tapes, like QolorFLEX Quad Chip LED Tape in RGB + Indigo, Amber, or Warm White, can be adjusted to create thousands of colors. We also offer an adjustable dual white for fine-tuning the color balance, and QolorFLEX 5-in-1 LED Tape in RGBWWCW or RGBACW for ultimate color control.

**QOLORFLEX LED TAPE INSTALLATIONS**

Click on an icon below to learn more about the QolorFLEX LED Tape installations used for the following theatrical, television, film, or architaainment projects.

**THEATRE**



*Evita at New York City Center*



*The Band's Visit*



*Charlie and the Chocolate Factory*



*War Paint*

**TELEVISION**



*Saturday Night Live Music Set*



*Amber Ruffin Show on Peacock*



*The Tonight Show with Jimmy Fallon on NBC*



*The Amazing Spiderman 2*



*Best Time Ever with Neil Patrick Harris on NBC*



*Late Night with Seth Meyers on NBC*



*TODAY on NBC*

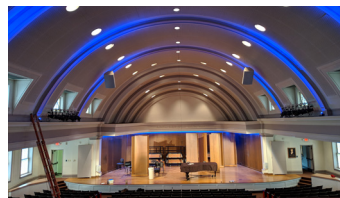


*Maya & Marty on NBC*

**LIVE EVENTS & ARCHITAINMENT**



*Big Apple Circus*



*Bradley University Dingeldine Music Hall*



*Red Rocks Church*



*Jason Bishop Show*

Nautica Shopping Mall  
in Tallinn, Estonia



Watch our [QolorFLEX Playlist](#) on YouTube.

**QOLORFLEX  
DIMMER  
SOLUTIONS**

**PROFESSIONAL EXPERIENCE**

QolorFLEX Dimmers pair perfectly with QolorFLEX LED Tape products and are RDM capable. All QolorFLEX Dimmer models (nine wired and three wireless) deliver ultra-smooth, flicker-free PWM dimming, and are available in two, three, four, five, and twenty four channel models. For instance, our QolorFLEX 5x8A Dimmer pairs perfectly with QolorFLEX 5-in-1 LED Tape.

QolorFLEX Dimmer Accessories, like wire, connectors, extrusions, and power supplies are also available.

**QOLORFLEX WIRELESS DMX DIMMER SOLUTIONS**

Click on an icon below to learn more about the QolorFLEX Multiverse wireless DMX Dimmer solution used for the theatrical or live event project, or architaainment installation.



*Tina: The Tina Turner Musical*



*A Christmas Carol*



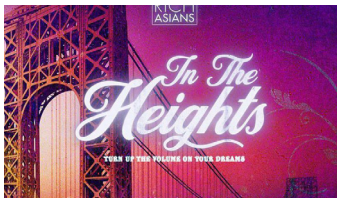
Peery's Egyptian Theater  
in Ogden, Utah



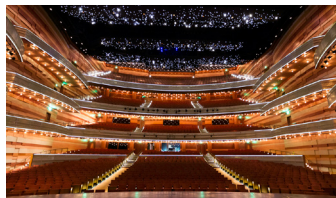
IIDA Fashion Show,  
Robin Hood Costume

**QOLORFLEX DIMMER INSTALLATIONS**

Click on an icon below to learn more about the QolorFLEX Dimmer solution used for the theatrical or live event project, or architaainment installation.



*In The Heights*



Eccles Theatre in Salt Lake City, Utah



The Muny in St. Louis, Missouri



Nautica Shopping Mall  
in Tallinn, Estonia



Watch our [QolorFLEX Playlist](#) on YouTube.

## PROFESSIONAL EXPERIENCE

As a sealed LED linear product that is extremely flexible, incredibly bright, and safe for indoor or outdoor use, [QolorFLEX NuNeon](#) is the perfect replacement for traditional neon lighting. QolorFLEX NuNeon is rugged, outdoor-rated, and dimmable. It can be cut to length and is available in a variety of colors plus RGB. It offers nearly the same visual impact as traditional blown glass neon without the problematic issues of installation and maintenance. QolorFLEX NuNeon's extreme flexibility includes a 1/2" minimum bending radius in the horizontal plane for ideal precision for signage, like lettering. It has a 6" minimum bending radius along the vertical axis.

Click on an icon below to learn more about QolorFLEX NuNeon in the following theatrical, live event, television, and indoor and outdoor architectural installations.

## THEATRE



*Freestyle Love Supreme*



*Be More Chill*



*Das Rheingold's Rainbow Bridge*  
at Lobero Theatre



*Seven Deadly Sins NYC*



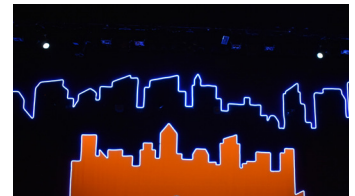
*SLEEPLESS London*



*Flamingo Kid at Hartford Stage*

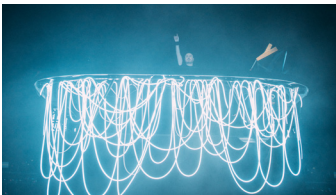


*Dr. Faustus at Yale University*



*Coolidge Middle School*

## LIVE EVENTS AND TELEVISION



*Duke Dumont show in Los Angeles,*  
California



*St Michael's Parish Church in*  
Edinburgh, Scotland



*Super Bowl LV Half Time*  
show featuring The Weeknd

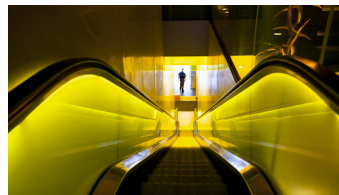


*The Break with Michelle Wolf*  
on Netflix

## ARCHITAINMENT



*Pink Sparrow office in*  
Brooklyn, New York



*Hudson Hotel New York*



*Ripley's Myrtle Beach,*  
South Carolina



*Macy's Herald Square*  
Holiday 2019 Windows



Watch our [QolorFLEX Playlist](#) on YouTube.

**QolorPIX**<sup>®</sup>

PLUG AND PLAY PIXEL CONTROL

**PLUG & PLAY  
PIXEL CONTROL**

## PROFESSIONAL EXPERIENCE

[QolorPIX Pixel Controlled LED Tape](#) and QolorPIX Tape Controller are plug and play products that make it easy to create thousands of professional dynamic lighting effects, from chases, fades, scrolls, bursts, and more, in minutes, using only a few DMX slots. QolorPIX Pixel Controlled LED Tape is designed for the most demanding professional applications, with 48 individually controlled LED lights per meter. Each reel of tape includes a soldered-on four-pin XLR connector on one end, creating a plug and play connection to the QolorPIX Tape Controller. QolorPIX Pixel Controlled LED Tape is ETL listed and compliant with CE and RoHS.

Click on an icon below to learn more about QolorPIX Pixel Controlled LED Tape and QolorPIX Tape Controller in the following theatrical, worship, live event, television, and archtainment projects.

### THEATRE



*Sound of the Silk Road*  
in Xi'an, China

### WORSHIP



*Falls Baptist Church*  
in Menomonee Falls, Wisconsin

### LIVE EVENTS



*HYPNO for Samsung*  
at CES 2019 Trade Show



*DARPA Subterranean Challenge*  
in Louisville, Kentucky

### TELEVISION



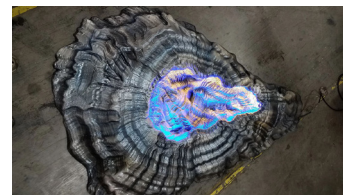
*Saturday Night Live, Star Trek Skit*



*The Tonight Show Starring Jimmy Fallon,  
Brainstorm with Jake Gyllenhaal*

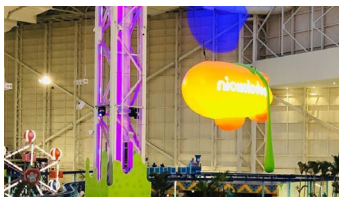


*Eurovision Song Contest*

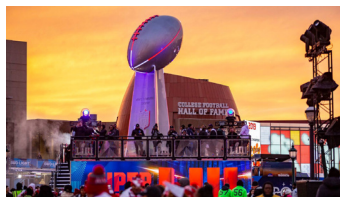


*Steven Spielberg's Amazing  
Stories Television Revival*

### ARCHITAINMENT



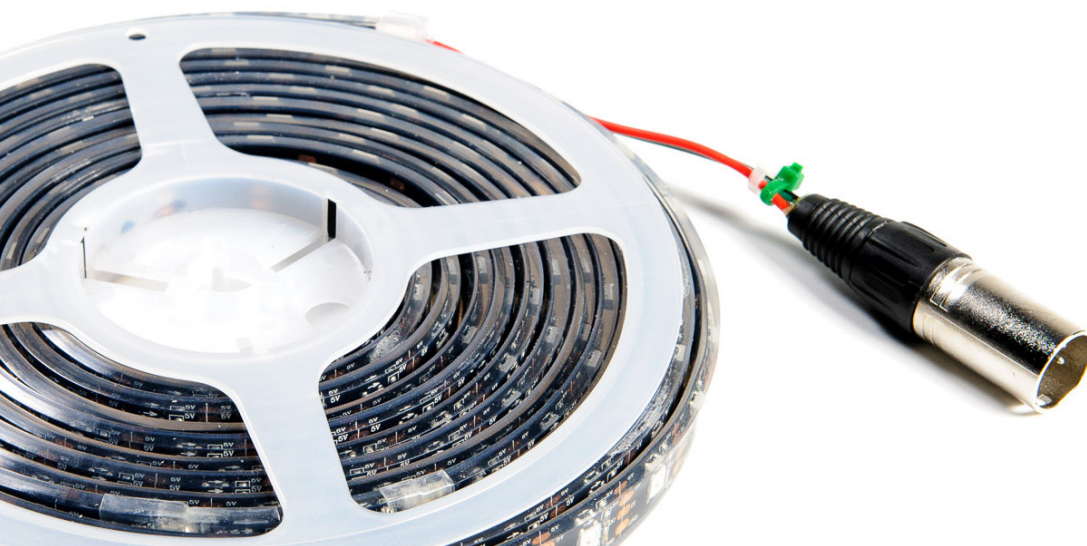
*American Dream*  
in Rutherford, New Jersey



*Vince Lombardi Trophy Replica*  
at Super Bowl Live in Atlanta, Georgia



*Custom QolorPIX Fixtures made for a  
confidential entertainment installation*



**CITY  
THEATRICAL**  
NEW YORK · LONDON

© City Theatrical. All Rights Reserved.